



User Guide

Installation and Licensing

Visual Components

Visual Components Product Family



Contents

- Introduction 3
- System requirements..... 3
- Installation Requirements 3
- Installation 3
 - Installing Visual Components.....3
 - Uninstall or Change Visual Components.....7
 - Change7
 - Uninstall9
- Licensing 11
- Evaluation license 11
- Commercial license 12
 - Commercial License key types12
 - Standalone product key.....13
 - Online Activation.....13
 - Robotics Solver Add-on Activation.....16
 - KUKA.Sim AddOn Activation21
 - Register Product Key.....25
 - Updating Registration Information28
 - Offline Manual Activation29
 - Online Deactivation.....30
 - Offline Manual Deactivation31
 - Deactivation limit/Transfer limit32
 - Activation renewal34
 - Managing Add-ons.....35
 - Network License37
 - Online Activation.....37
 - Using a Network License Key38
 - Changing the Network License Server address.40
 - Borrowing a Network License Key for offline use41
 - Manual Activation42
 - Deactivation42
 - Activation renewal42
- Upgrade License 43
- Command line deployment 44
 - Command line deployment44
 - Command-line switches order44
 - Fully silent installation44
 - Alternative options for showing some UI during installation45
 - Restart Options.....45
 - Custom Installation Path.....45
 - Uninstallation46
 - License settings.....46
- Frequently Asked Questions..... 47

Introduction

This User Guide has been designed to assist users who are installing and activating software license keys for a Visual Components product.

System requirements

The updated system requirements for using a Visual Components product, can be found at: <https://www.visualcomponents.com/system-requirements/>

Installation Requirements

For a successful installation you will need:

- Visual Components product installer
- Software license key

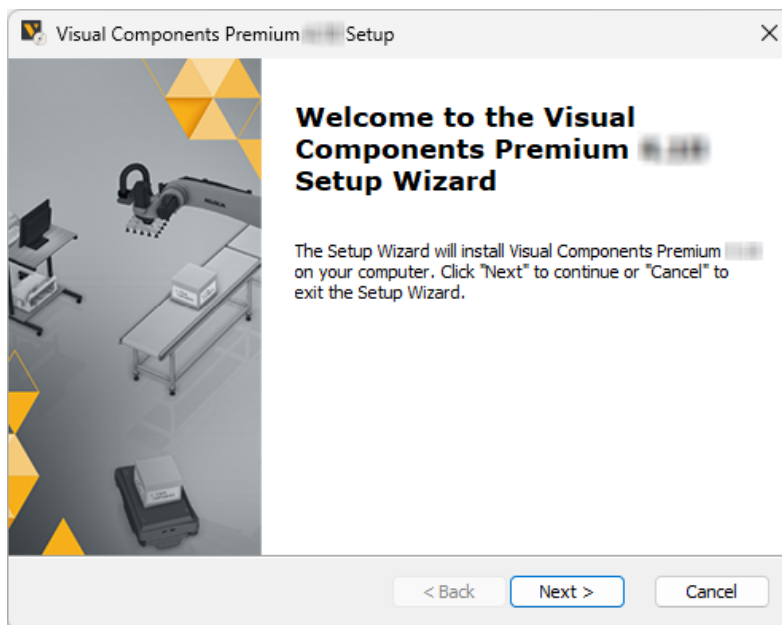
A software license key can only be activated for a specified product and version. We recommend that prior to installation, you confirm for which product and version your license key is intended.

Installation

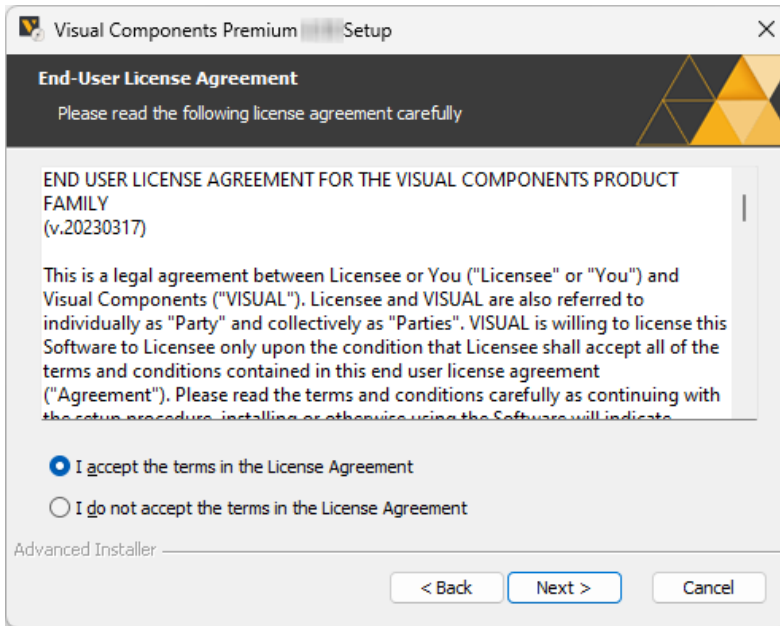
To install Visual Components, you will first need to visit [visualcomponents.com/downloads/](https://www.visualcomponents.com/downloads/) to download the installer for your product and version.

Installing Visual Components

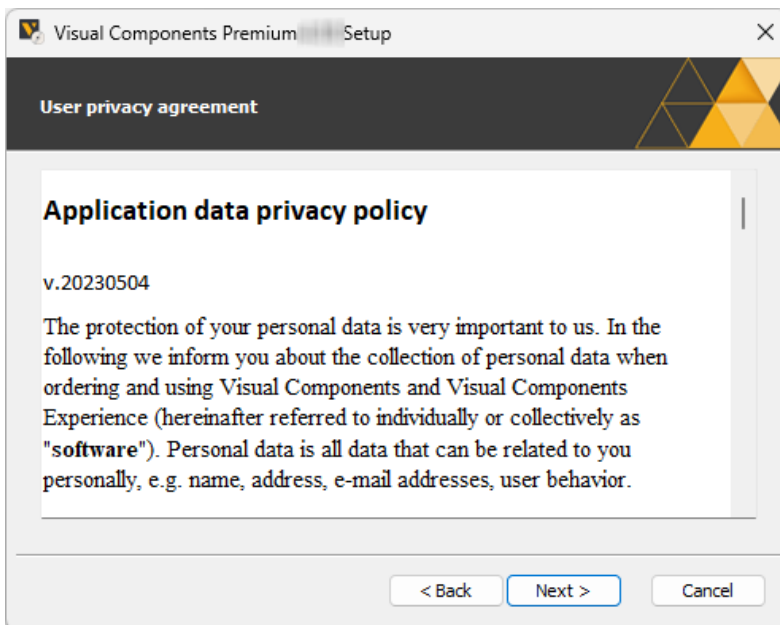
1. Begin by running the installer and from the *Setup Wizard* dialog click **Next**.



- 2. In the **End-User License Agreement** dialog, read and accept the terms, then click **Next**.

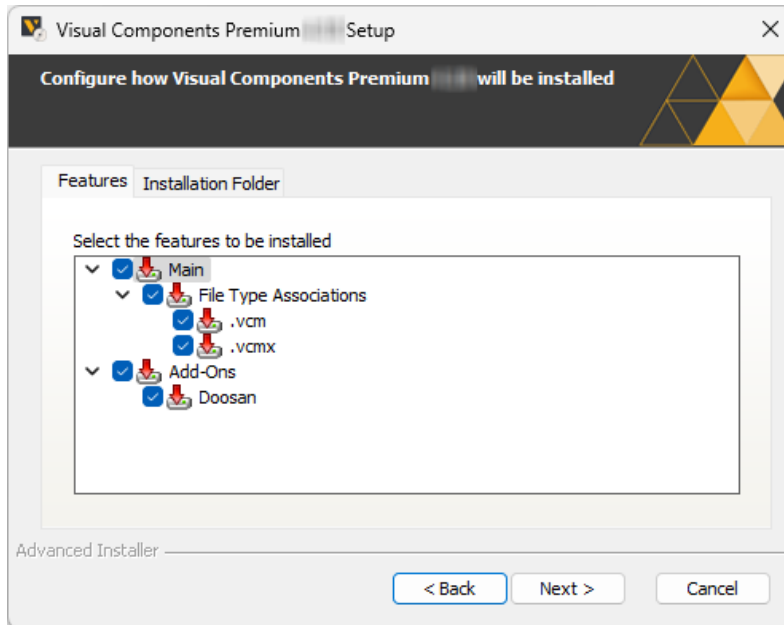


- 3. Review the privacy policy and click **Next**.

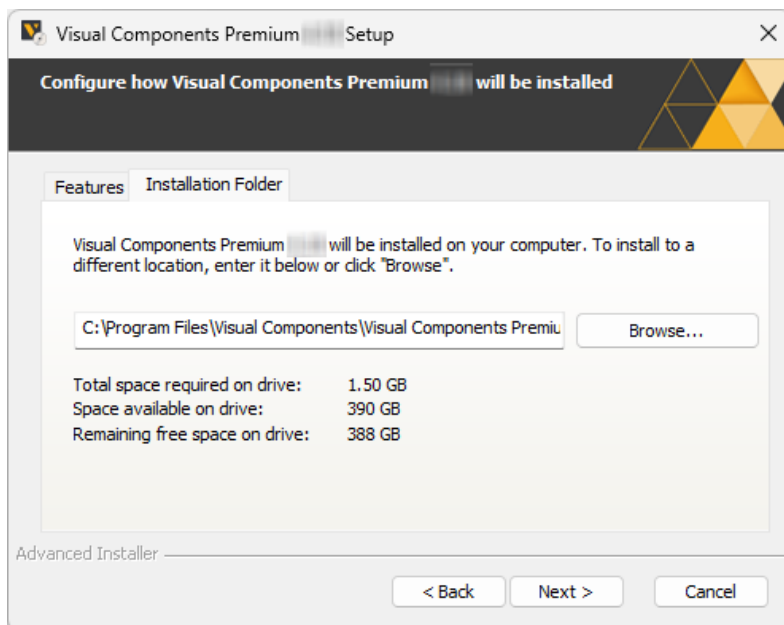


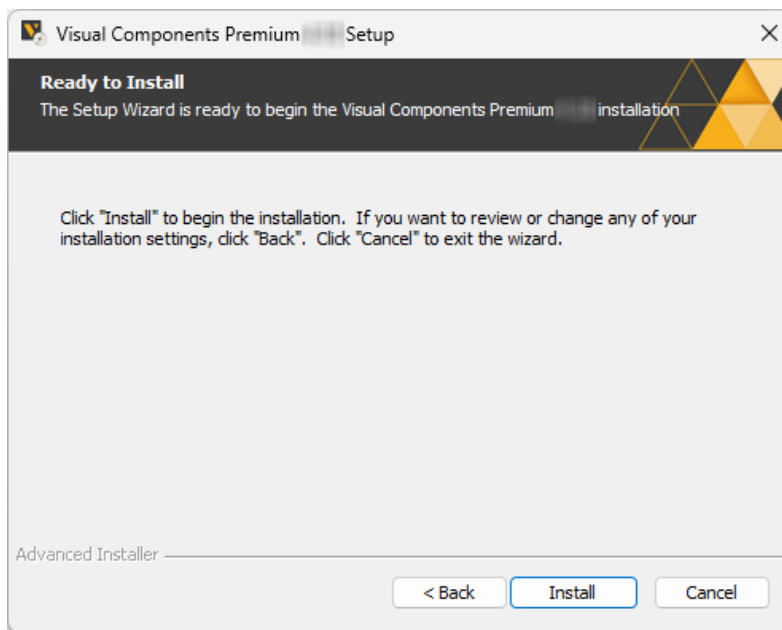
- 4. In the **Features** tab of the **Configure** dialog, you may disable the **File Type Associations** for this application. And you may also disable installation of **Add-Ons**.

Note: If you wish to later modify these features, refer to the [Uninstall or Change Visual Components](#) section below.

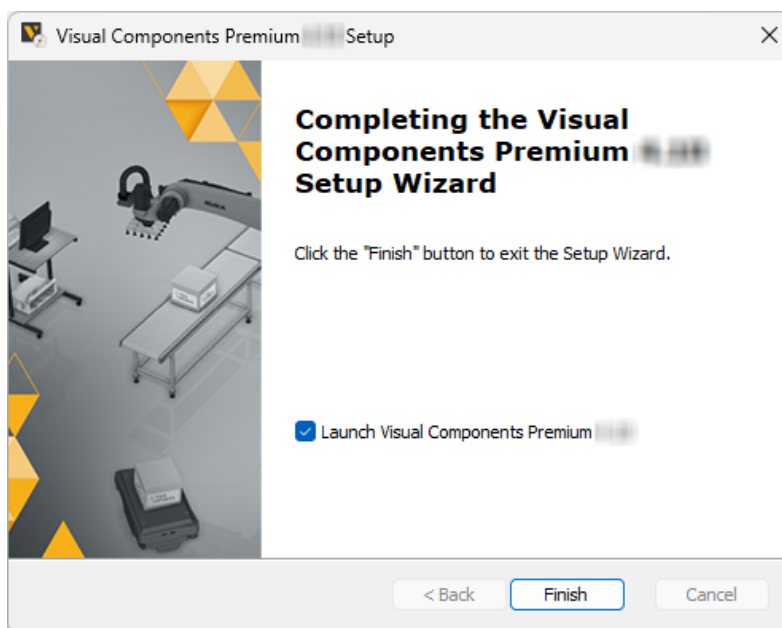


And in the **Installation Folder** tab, accept the default location, or click **Browse** to set the location of your Visual Components program files, then click **Next**.



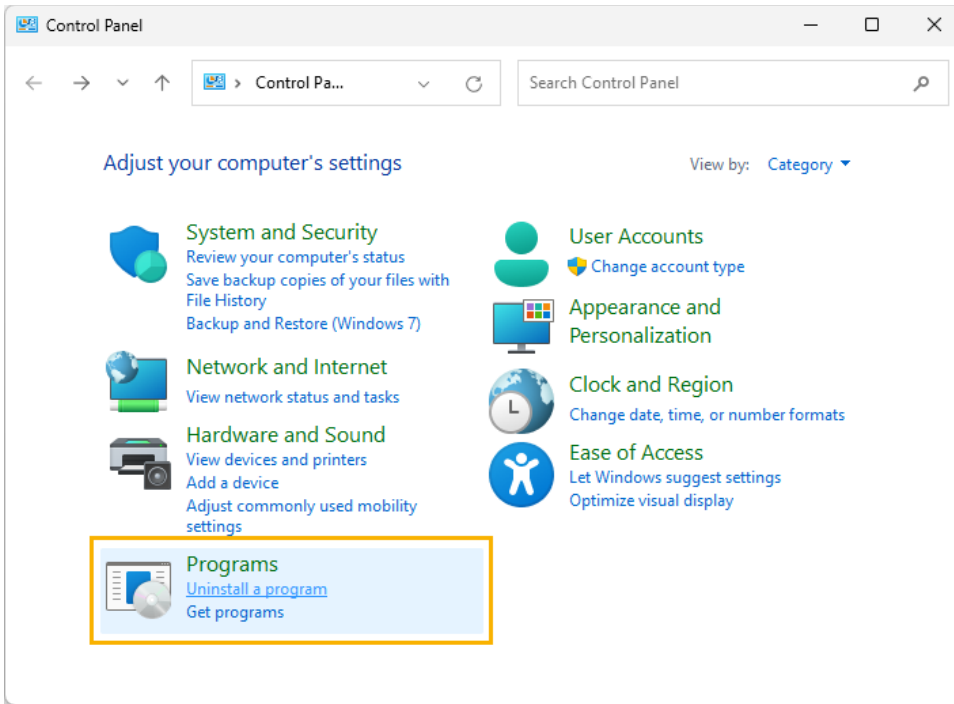
5. Then click *Install*.**6. Then click *Finish*.**

Note: Uncheck the *Launch* application option if you do not wish to launch the application right away.



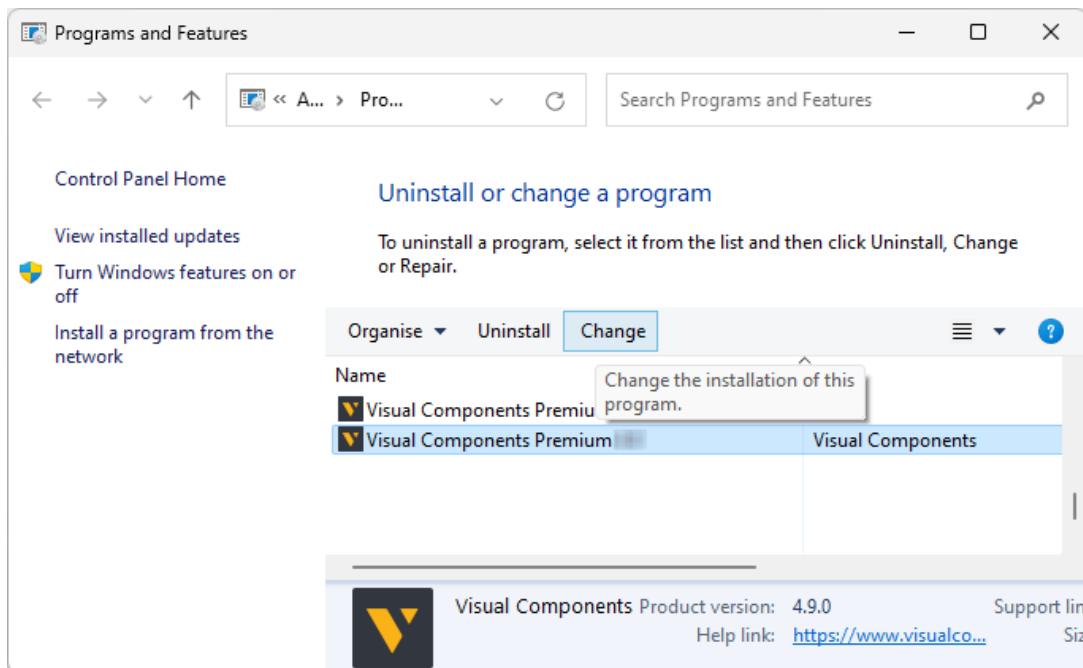
Uninstall or Change Visual Components

Begin for example by launching the Windows Control Panel and access the **Uninstall a program** options.

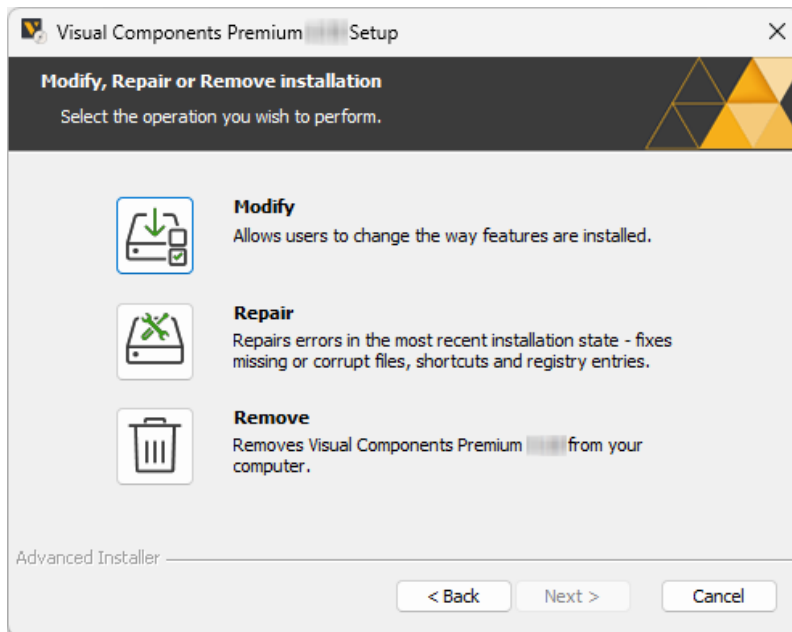


Change

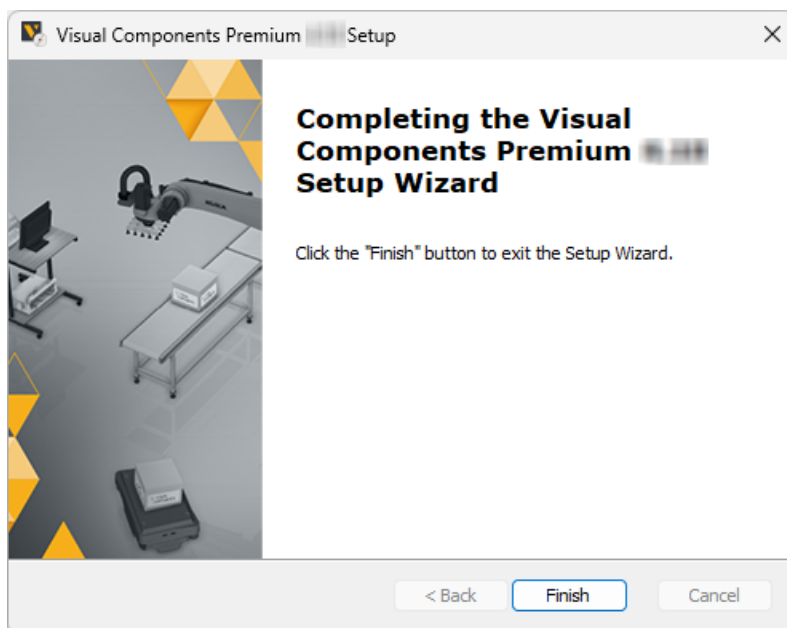
1. In the **Uninstall or change a program** panel, select the Visual Components product you wish to remove, then click **Change**.



2. Then from the *Setup Wizard* dialog click **Next**.
3. In the **Modify, Repair or Remove installation** dialog, you may select the following options:
 - Select **Modify** to enable or disable application features. See installing [Features](#).
 - Select **Repair** to repair the application. This process reinstalls the application to replace any missing files.
 - Select **Remove** to remove the application and files. See [Remove Visual Components](#).

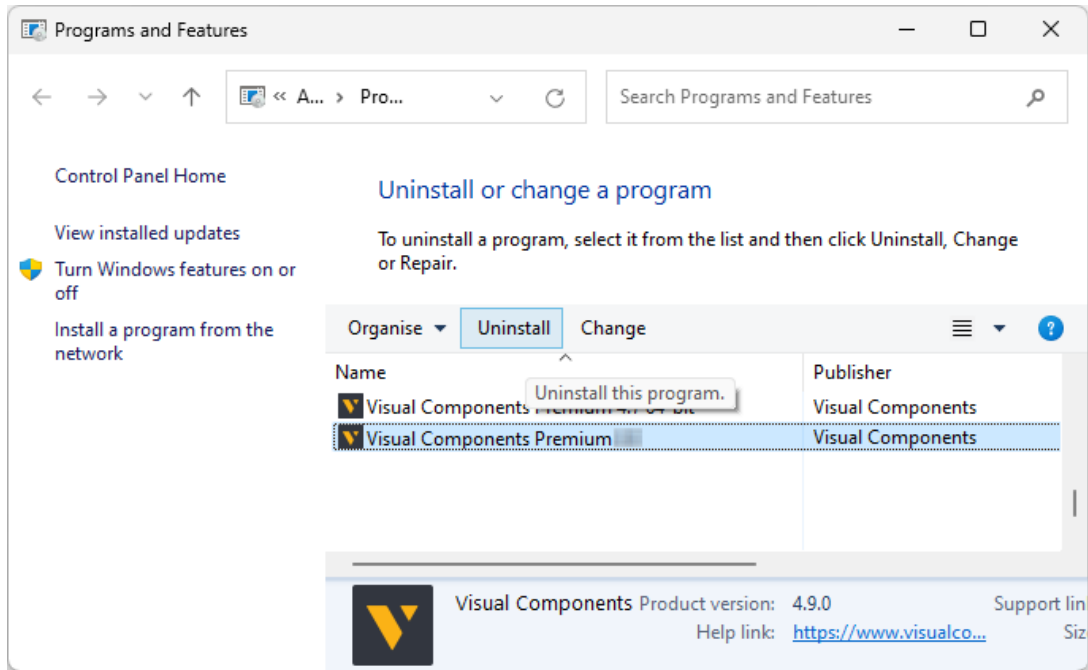


4. In the *Setup Wizard* dialog, click **Finish**.

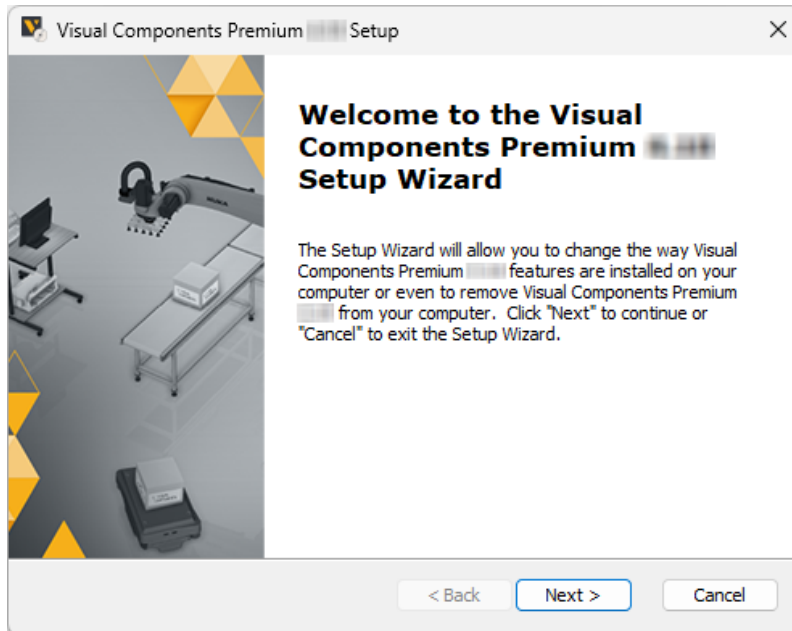


Uninstall

1. In the **Uninstall or change a program** panel, select the Visual Components product you wish to remove, then click **Uninstall**.



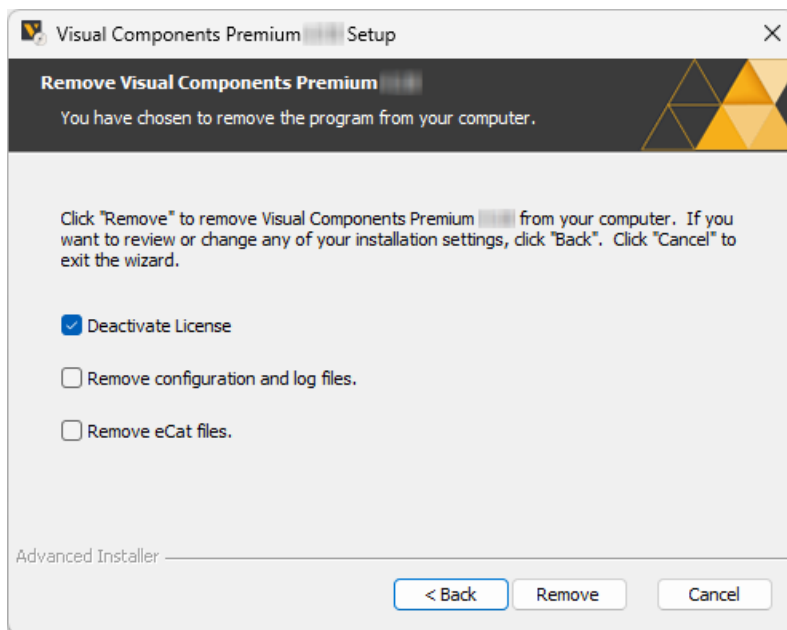
2. In the *Setup Wizard* dialog, click **Next**.



3. In the **Remove Visual Components** dialog, you may select the following options:

- Select **Deactivate License** to deactivate any license keys for this product that are currently active on your device.
Note: We recommend deactivation of a product license key during uninstallation, to avoid possible future issues when re-installing the software on a different computer.
- Select **Remove configuration and log files** to remove these files from the following example directory:
C:\Users\UserName\AppData\Local\Visual Components\Visual Components Premium X.X
- Select **Remove eCat files** to remove eCatalog files from the following directory:
C:\Users\Public\Documents\Visual Components\X.X\Models
Note: This process does not affect any data in your *My Models* folder. For example in the following directory:
C:\Users\UserName\Documents\Visual Components\X.X

Then click **Remove**.

**4.** In the *Setup Wizard* dialog, click **Finish**.

Licensing

The first time you run a Visual Components application, you will be prompted to provide either a standalone software license key, or the address to a Visual Components Network License Server. Refer to the [Commercial License section](#) for more information.

Note: Your computer and network must allow traffic from Visual Components software, so you may need to modify your firewall settings. For more information, refer to the [Frequently Asked Questions](#) section.

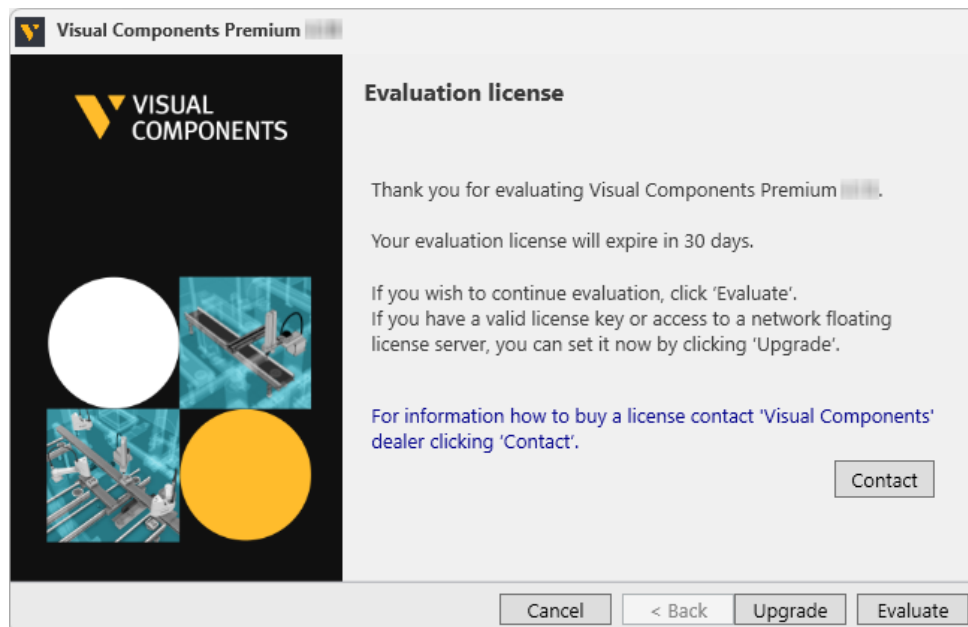
Evaluation license

Evaluation licenses are software license keys with a specific number of activation days. Once activated on a standalone computer system, they cannot be deactivated, nor can they be transferred to another system.

Activation of the evaluation license, will expire automatically after the specified number of activation days. After the evaluation period, the user is required to purchase a [Commercial License](#) to continue using the Visual Components product.

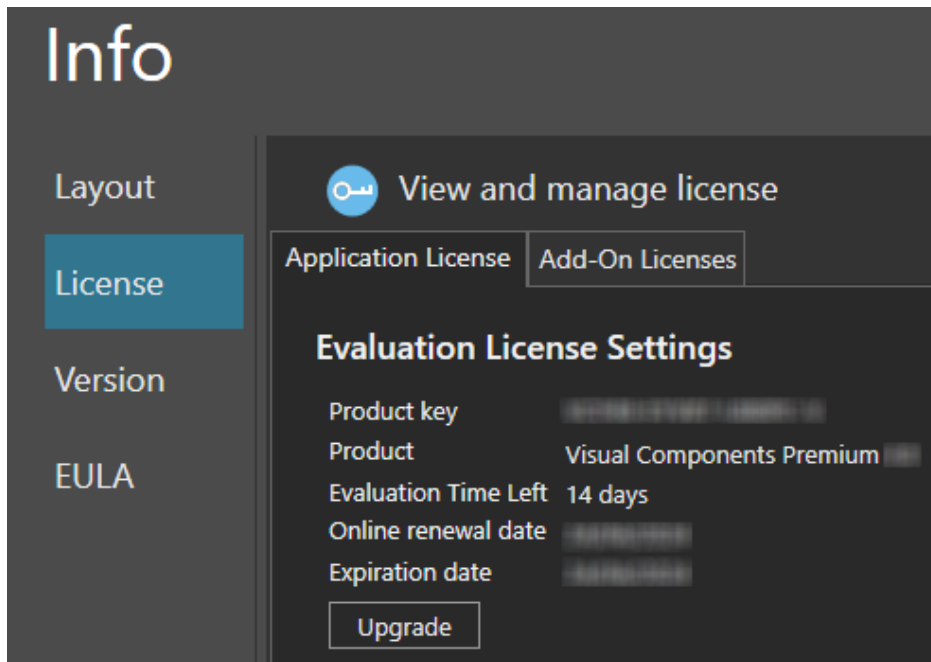
1. To start your evaluation period, visit visualcomponents.com/downloads/ to download the installer for your product and version. Then install your Visual Components application and activate your evaluation license key.
2. When starting your application, from the **Evaluation License** dialog, you can either choose **Upgrade** or **Evaluate** to continue using the software within the evaluation period.

Note: You can use this dialog to track how many days remain of your evaluation period.



3. To upgrade during the evaluation period, select the **FILE** tab to access the Backstage view, then select **Info** and **License**.

4. And from the Application License tab click Upgrade.



Commercial license

A commercial license is either a time limited or perpetual license key, that can be found in your shipping note.

Commercial License key types

License keys are available for the following Visual Components products:

- Visual Components Premium
- Visual Components Professional
- Visual Components Essentials
- Visual Components Premium OLP
- Visual Components Professional OLP
- Visual Components Robotics OLP

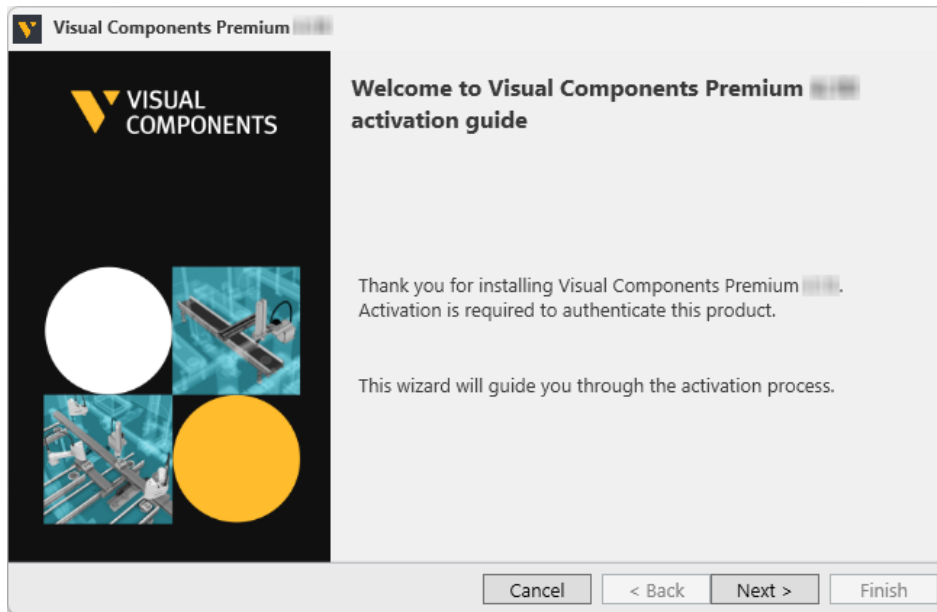
Note: Any references to “Robotics OLP” in this user guide, refers to all three OLP products listed above, as part of the Visual Components Robotics OLP family of products.

Standalone product key

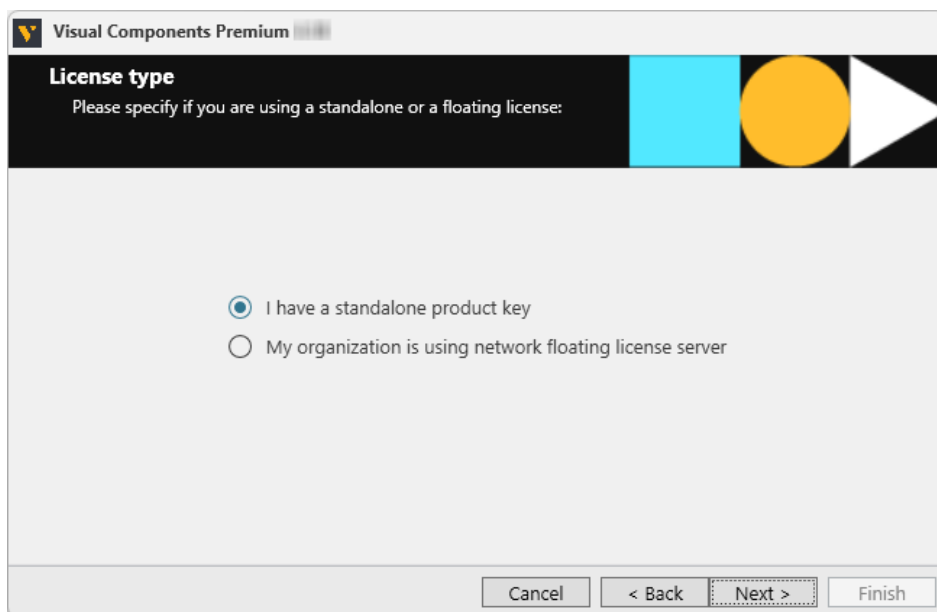
Online Activation

To use your commercial product key to activate a Visual Components product, follow these steps:

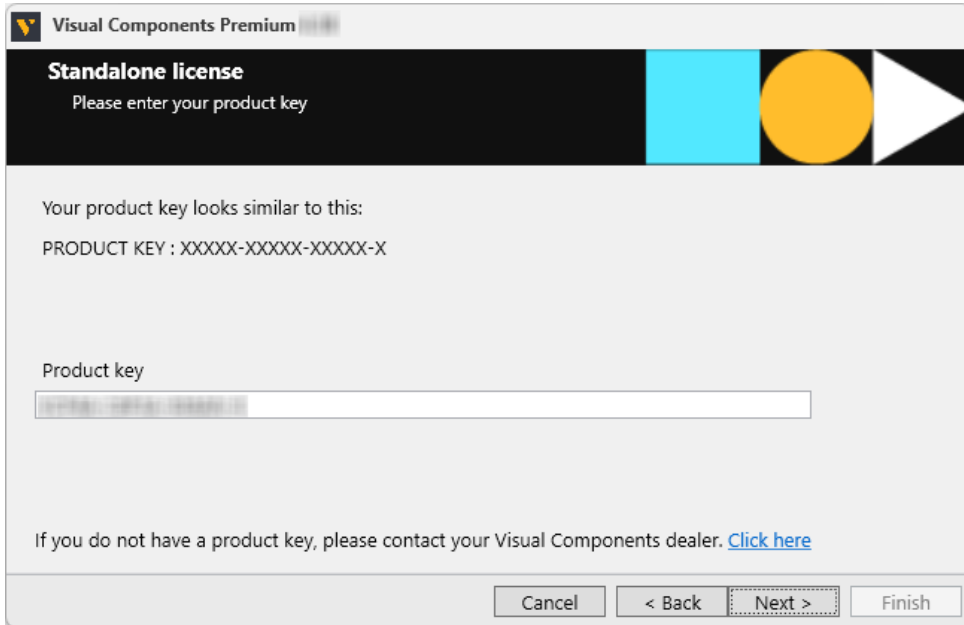
1. Run your Visual Components application.
2. On the *Welcome* dialog, click **Next**.



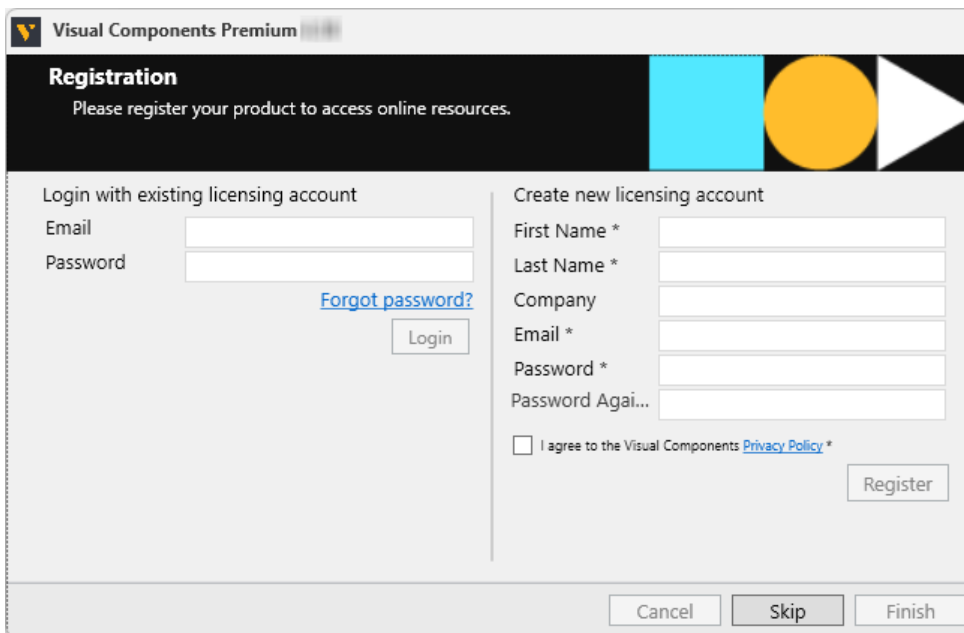
3. On the License type dialog, select I have a standalone product key, and then click Next.



- 4. In the **Standalone license** dialog, enter your 16-digit product key, and then click **Next**.
Note: If you have a license key that includes Robotics OLP, some features will be available to enable in the Backstage view. Refer to the **Enable Robotics OLP** section for more information.

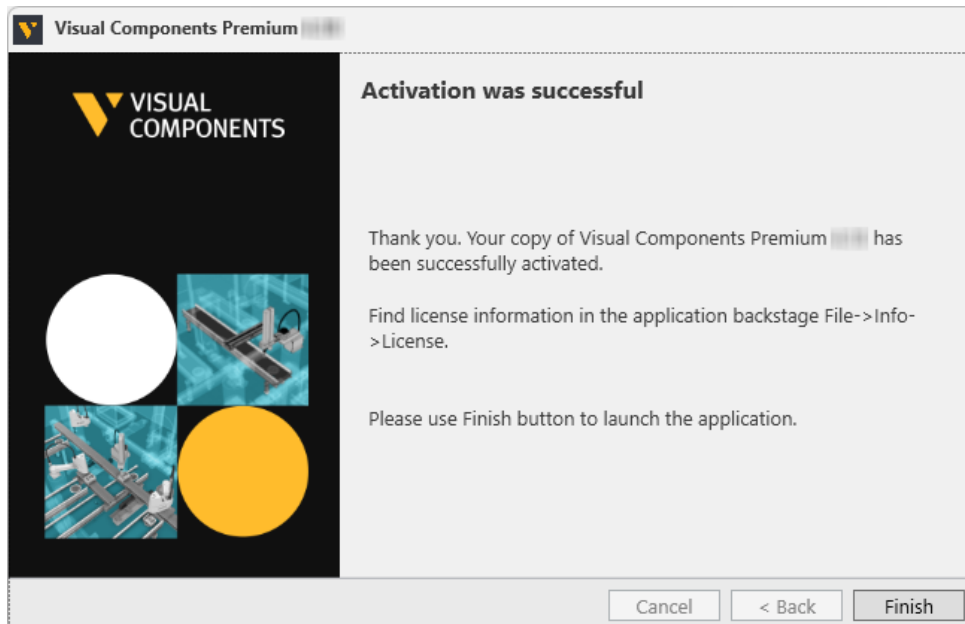


- 5. If there is an error or issue with the license, contact Visual Components licensing support via email at licensing@visualcomponents.com.
- 6. Following product activation, use the **Registration** dialog to create a licensing account using an email address and password. Or you can select **Skip** and register an account later, using the steps outlined in the **Register Product Key** section.



NOTE! Registration requires an active Internet connection and the password you create must be at least eight characters in length and include the following:

- At least one lower case letter.
 - At least one upper case letter.
 - At least one special character.
 - At least one number.
7. Once you have registered your product, you can use the account to manage your software licenses online in the Customer Portal at license.visualcomponents.net and request customer support at support.visualcomponents.com.
 8. Click **Finish** to complete licensing.

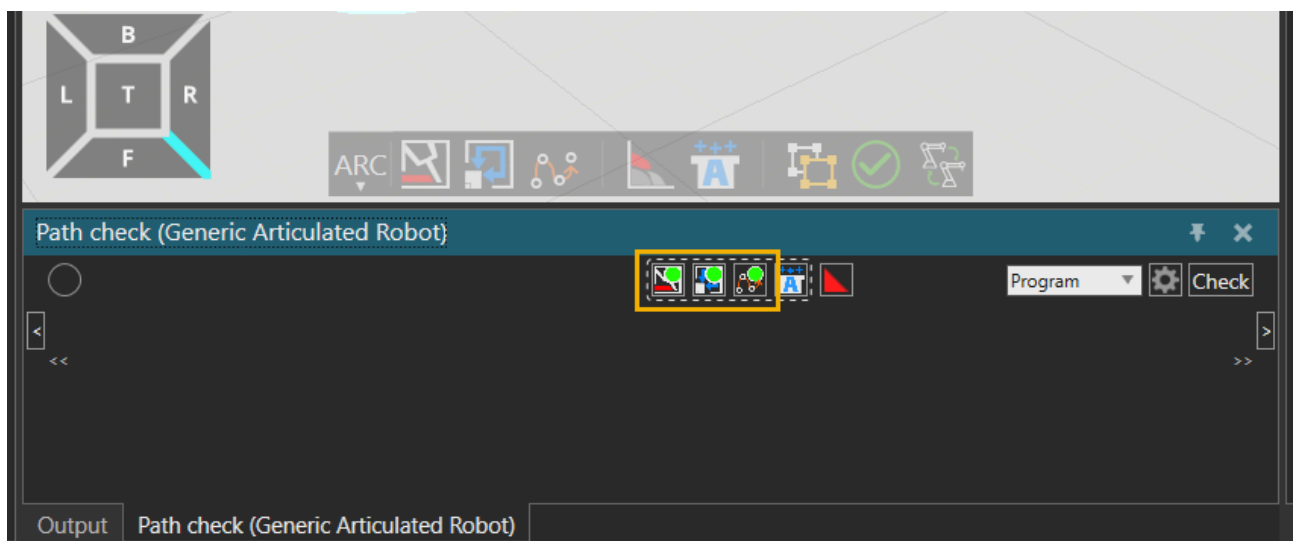


Robotics Solver Add-on Activation

To activate a Visual Components Robotics Solver Add-on license key, you should also have a license key for one of the following products:

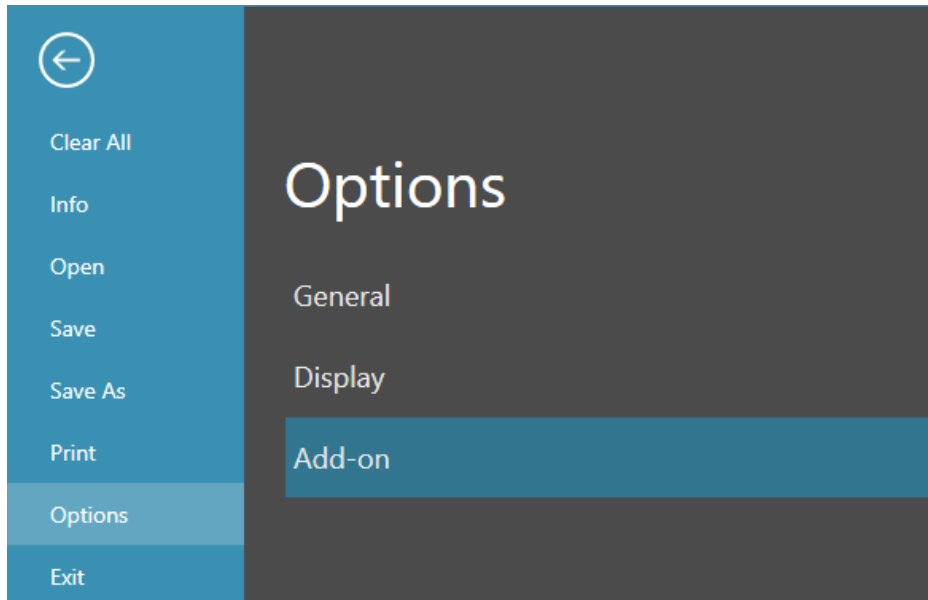
- Visual Components Premium OLP
- Visual Components Professional OLP
- Visual Components Robotics OLP

Note: A Robotics OLP product will enable OLP features in the **PROGRAM** and **PAINT** tabs, including the **Path Check** Panel. Activating the additional Robotics Solver Add-on License enables three buttons in the **Path Check** Panel, and some additional settings that are only available when using the Robotics Solver Add-on.

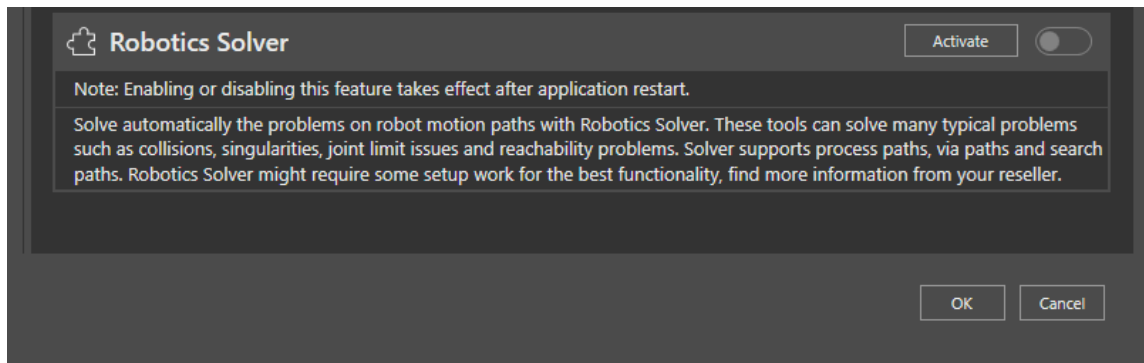


To activate the Robotics Solver Add-on follow these steps:

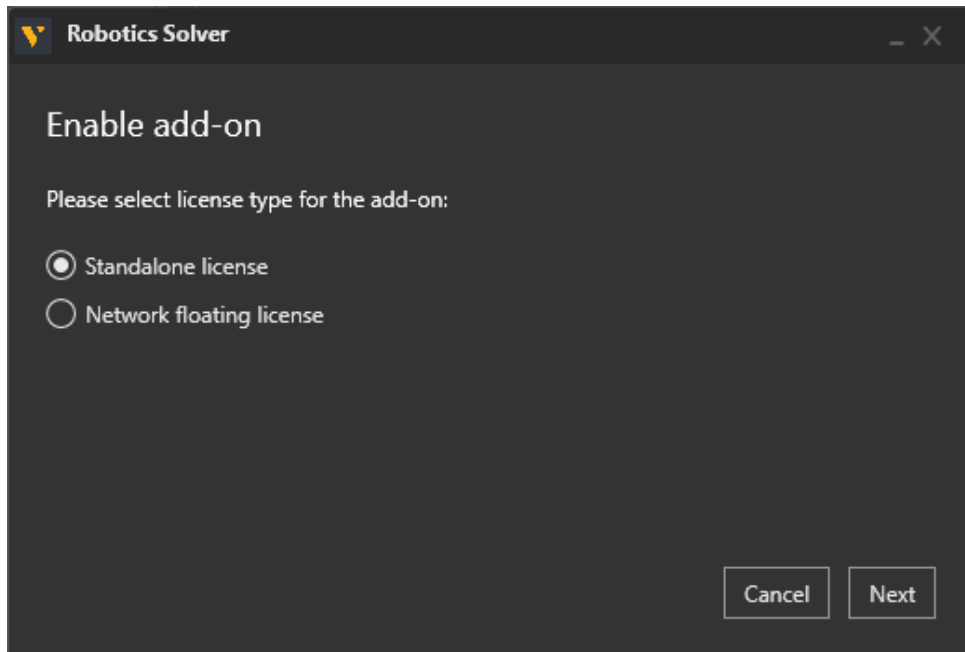
1. Start your Visual Components Robotics OLP application.
2. Select the **FILE** tab to access the Backstage view, then select **Options** and **Add-on**.



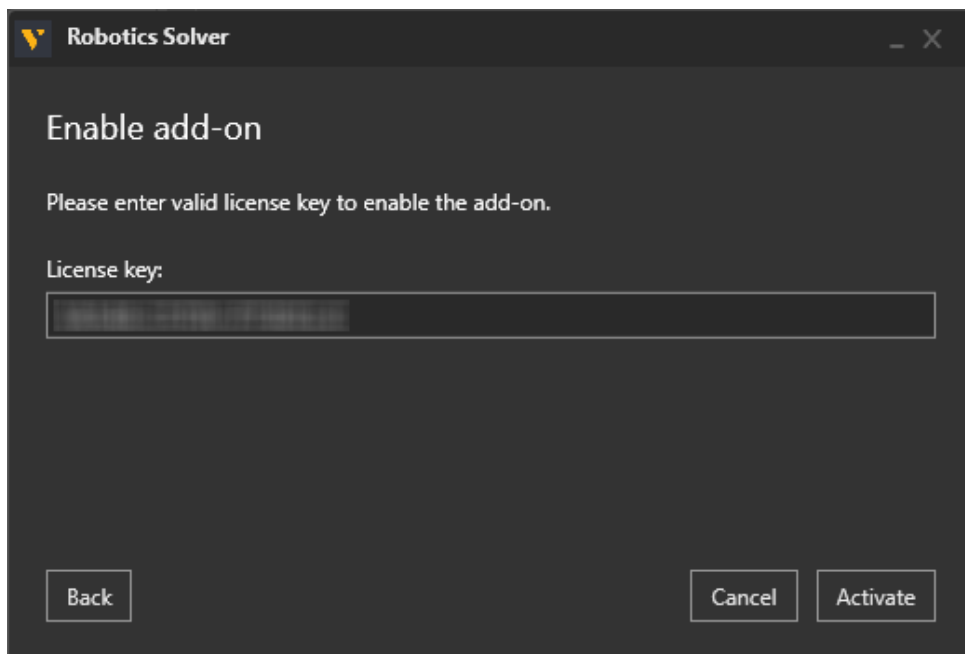
3. From the View and manage **Add-ons** section for Robotics Solver click Activate.



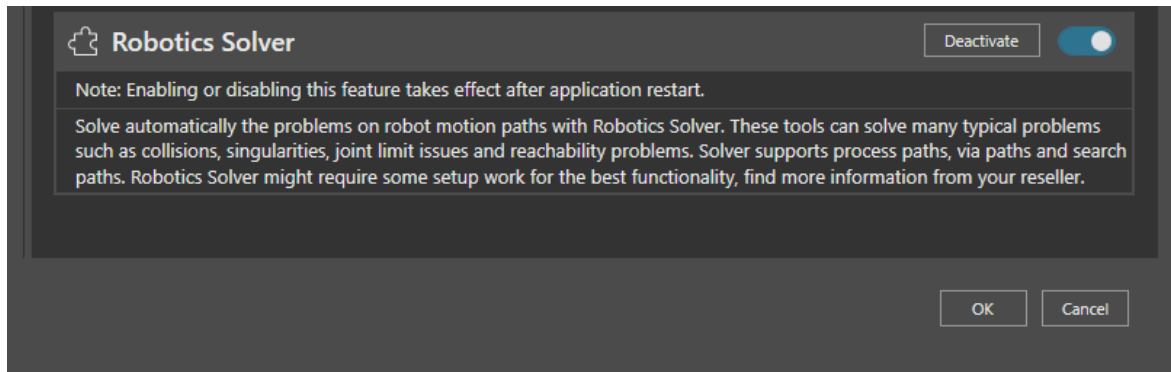
4. In the **Robotics Solver** dialog select your license type. In this example we will choose **Standalone license**, and then click **Next**. If you are using a **Network floating license** refer to the [Network License](#) section.



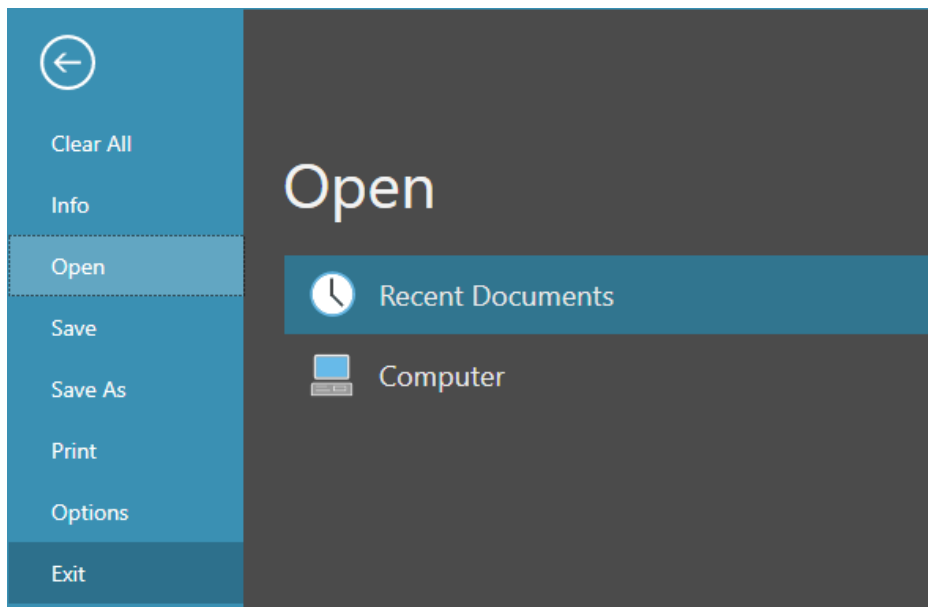
5. Then enter your **Robotics Solver** Add-on License key and click **Activate**.



- Once the **Robotics Solver** Add-on has been enabled, click **OK** below.

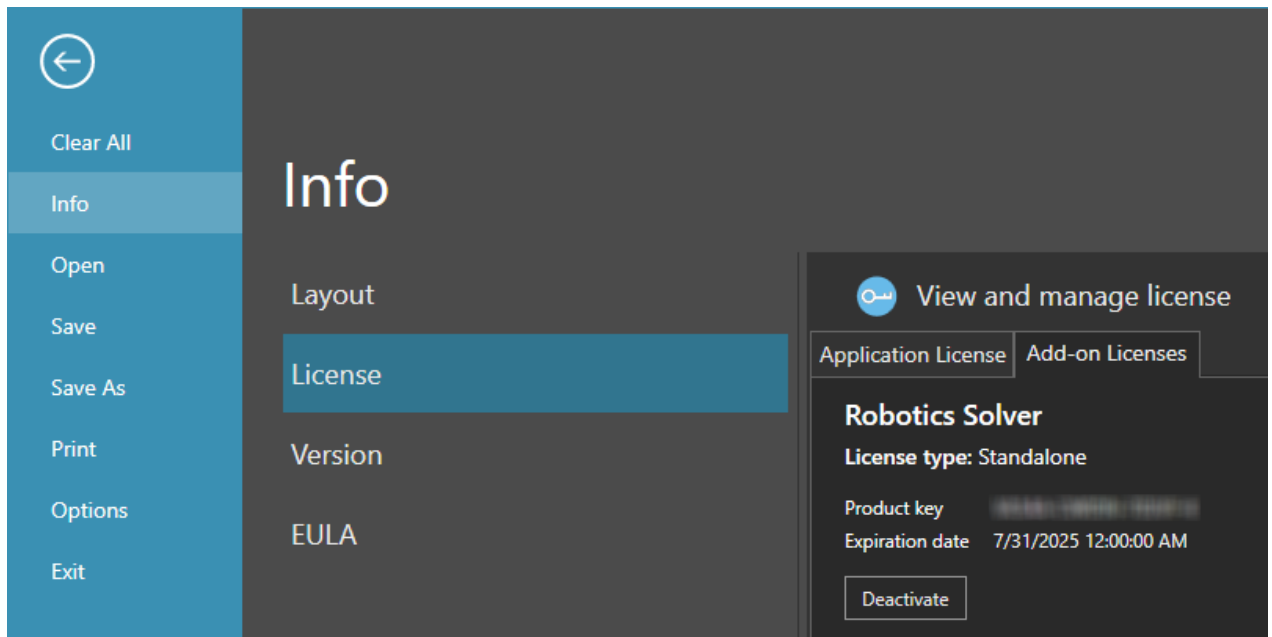


- Then select the **FILE** tab to access the Backstage view and use **Exit** to close the application and restart.



- Once the **Robotics Solver** Add-on has been enabled, from the Backstage view you can use the toggle to turn the feature on or off or use **Deactivate** to deactivate it.

9. To check the status of your Robotics Solver Add-on license, use the **FILE** tab to access the Backstage view, then select **Info** and **License** and the **Add-On Licenses** tab.

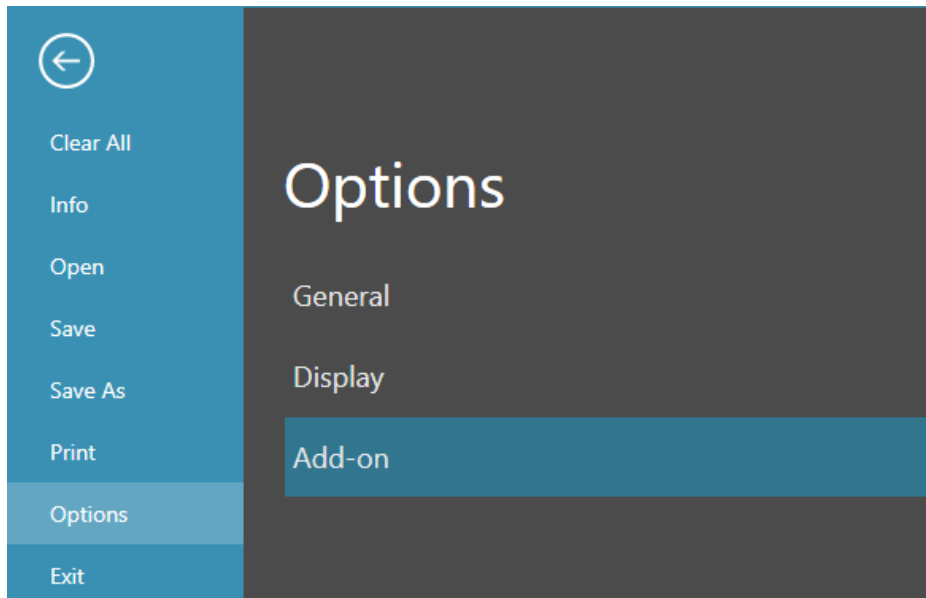


Note: Should you ever need to transfer your software licenses to another Visual Components Customer Account, any add-on Licenses you have activated will also be transferred. For more information refer to the [Updating Registration Information](#) section.

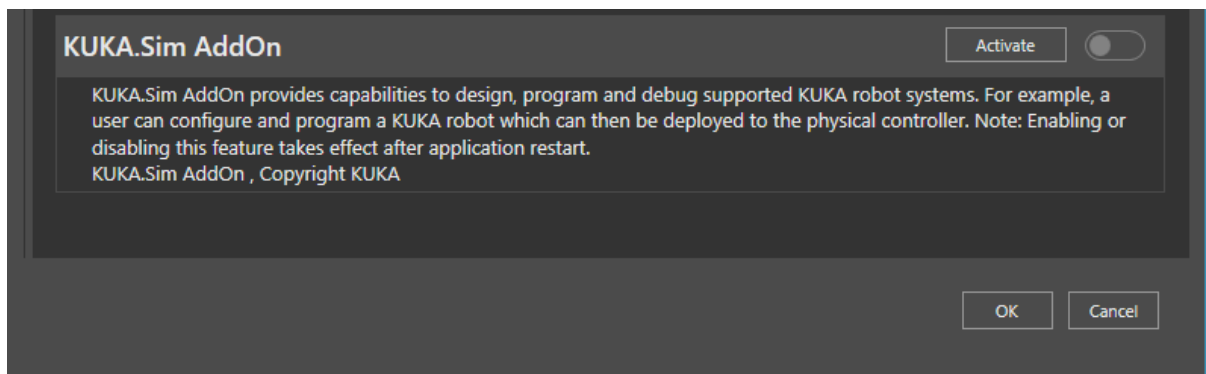
KUKA.Sim AddOn Activation

The KUKA.Sim AddOn is available for users of Visual Components Premium and Premium OLP. To activate the add-on follow these steps:

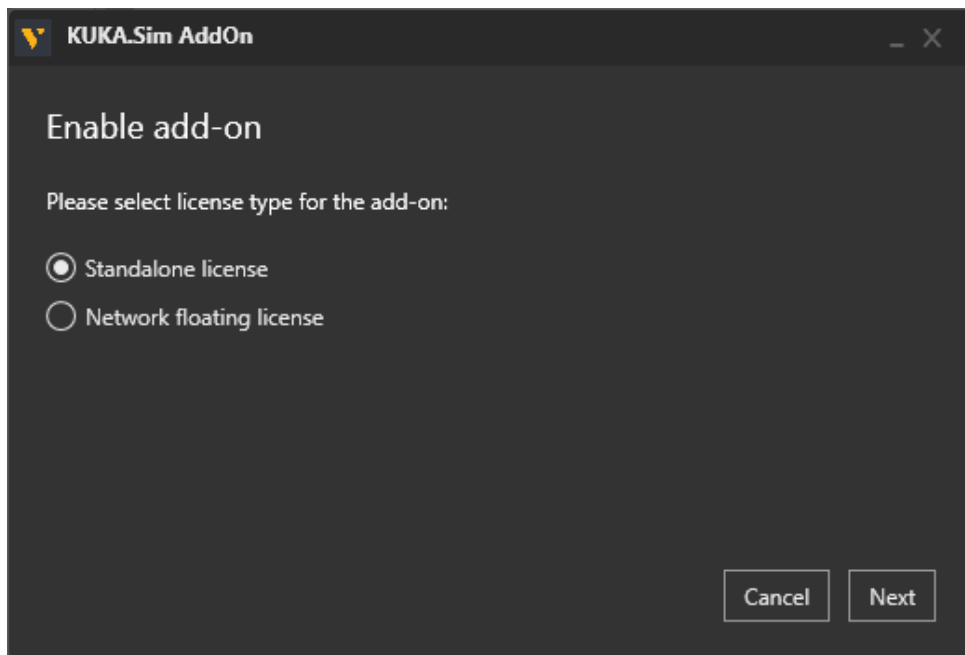
1. Start your Visual Components application.
2. Select the **FILE** tab to access the Backstage view, then select **Options** and **Add-on**.



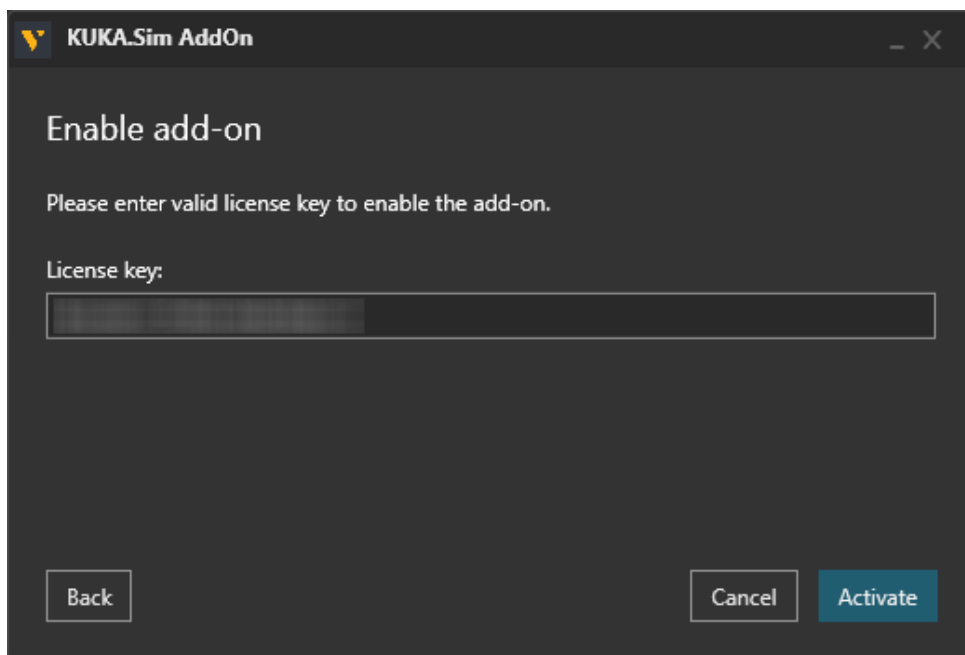
3. From the View and manage Add-Ons section for KUKA.Sim AddOn click Activate.



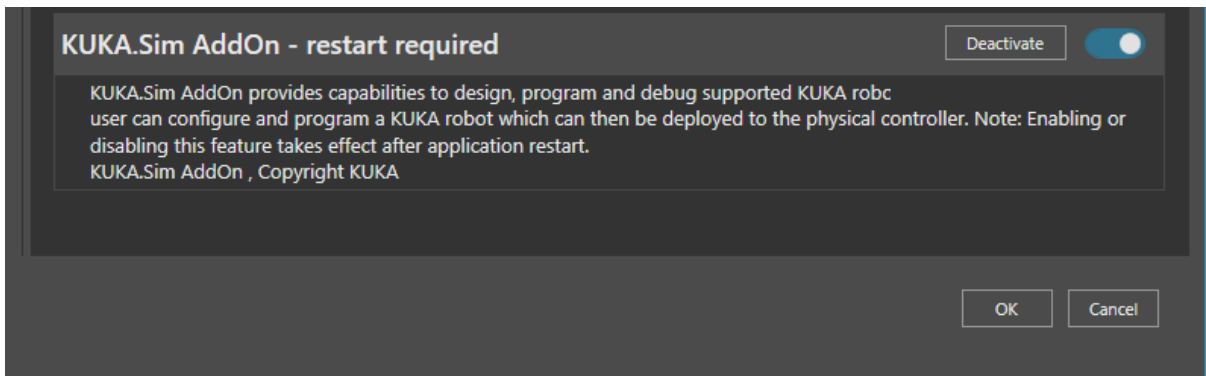
4. In the **KUKA.Sim AddOn** dialog select your license type. In this example we will choose **Standalone license**, and then click **Next**. If you are using a **Network floating license** refer to the [Network License](#) section.



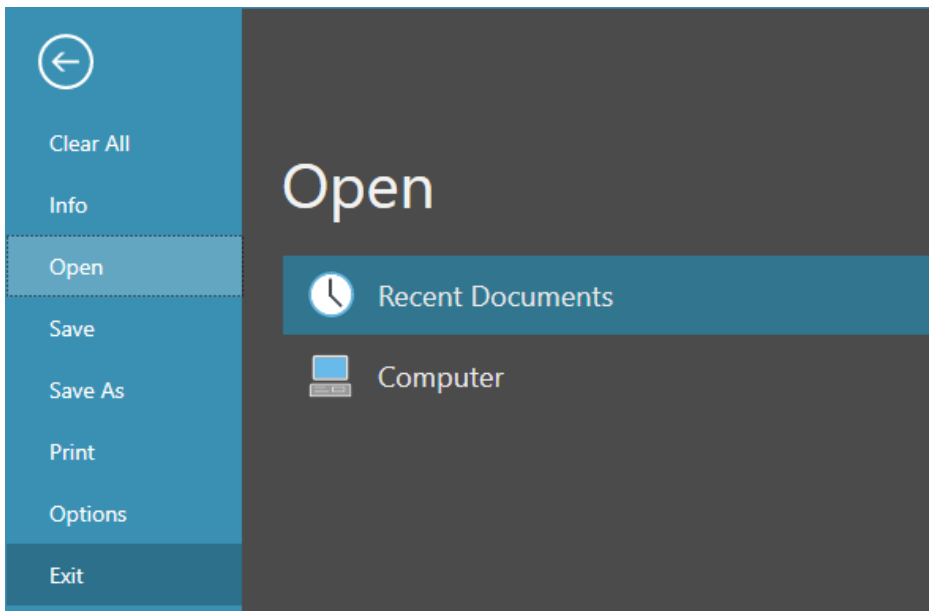
5. Then enter your **KUKA.Sim AddOn** License key and click **Activate**.



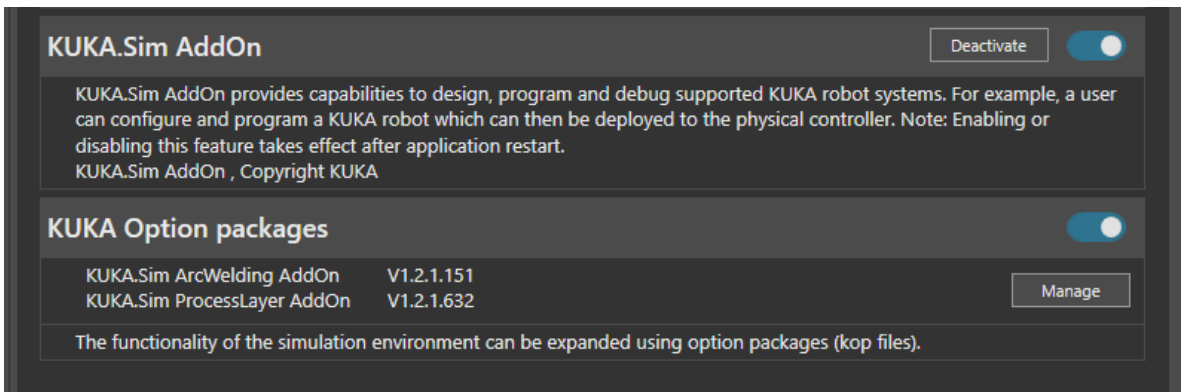
- Once the **KUKA.Sim AddOn** has been enabled, click **OK** below.



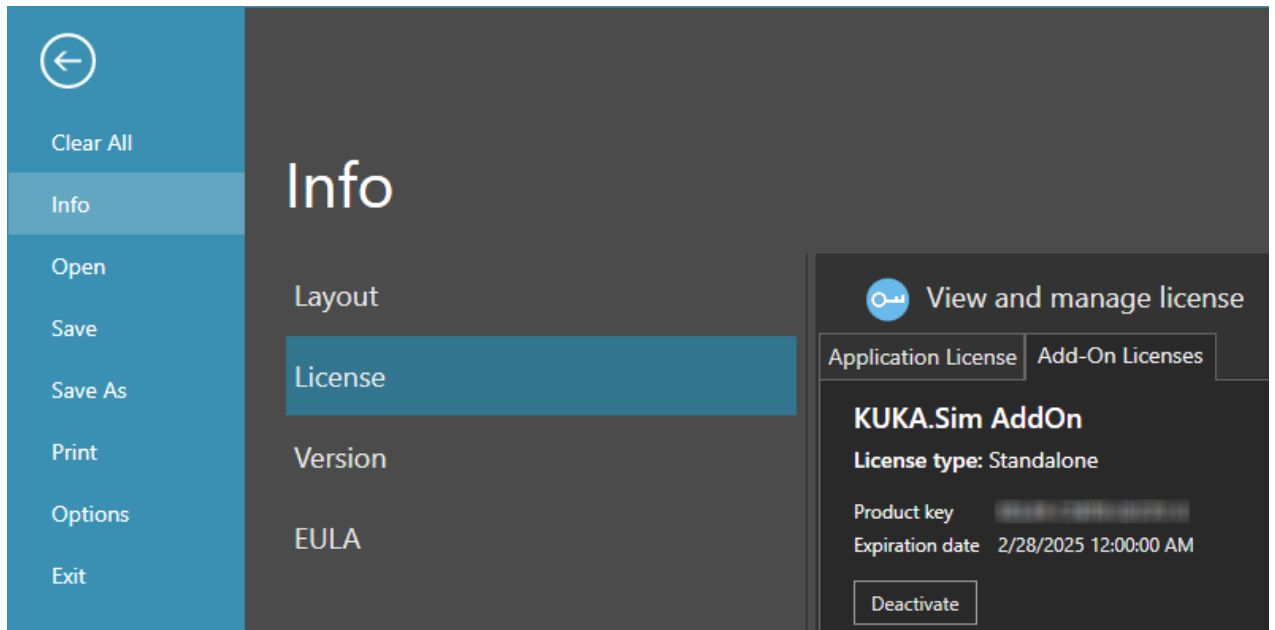
- Then select the **FILE** tab to access the Backstage view and use **Exit** to close the application and restart.



Note: To manage the Add-on, use the **FILE** tab to access the Backstage view, then select **Options** and **Add-on**. And under **View and manage Add-ons**, refer to the **KUKA.Sim AddOn** sections.



- To check the status of your KUKA.Sim AddOn license, use the **FILE** tab to access the Backstage view, then select **Info** and **License** and the **Add-On Licenses** tab.

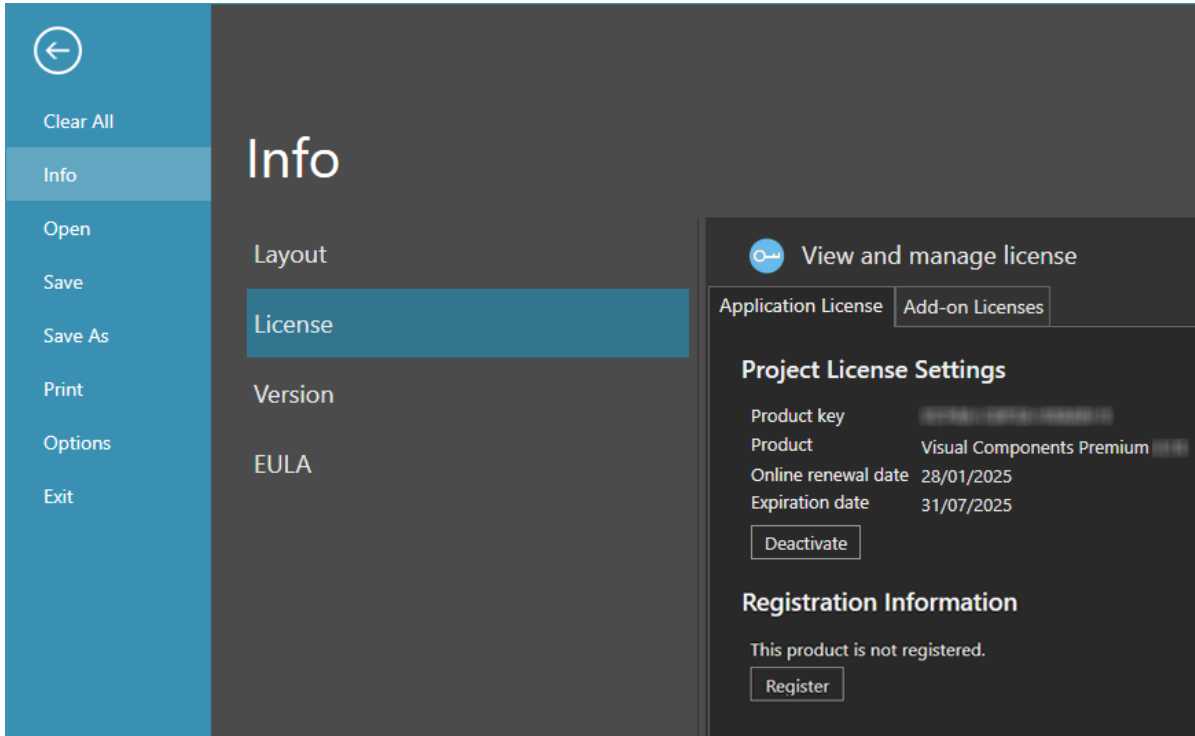


NOTE: Should you ever need to transfer your software licenses to another Visual Components Customer Account, any add-on Licenses you have activated will also be transferred. For more information refer to the [Updating Registration Information](#) section.

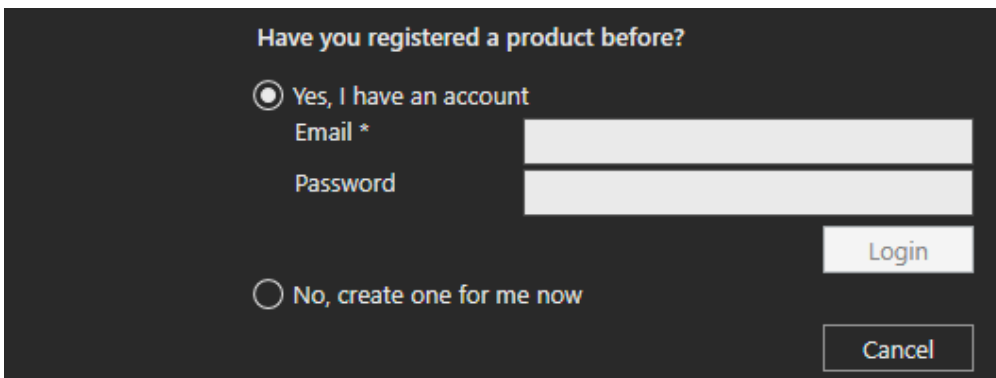
Register Product Key

If you skipped the product Registration option while activating your software license key, you can register using the following options:

1. Select the **FILE** tab to access the Backstage view, then select **Info** and **License**. And under **Registration Information** click **Register**.



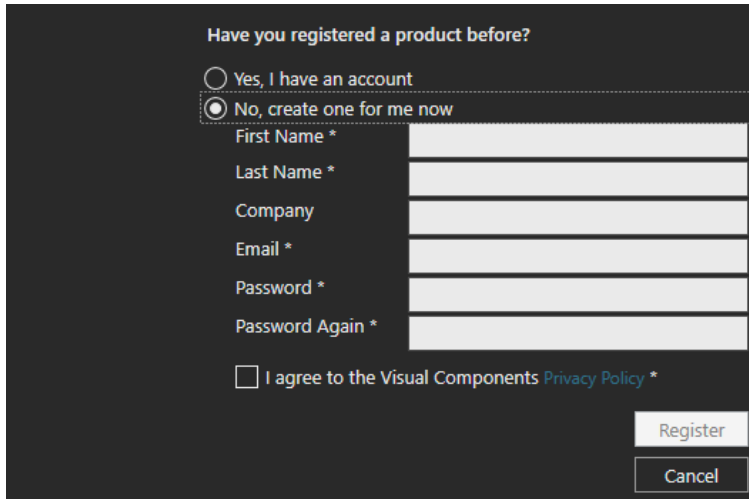
2. You can then Register by either selecting **Yes, I have an account** and signing in using the email and password for an existing account. Or create a new account by choosing **No, create one for me now**.



3. And to create a new account complete the registration form.

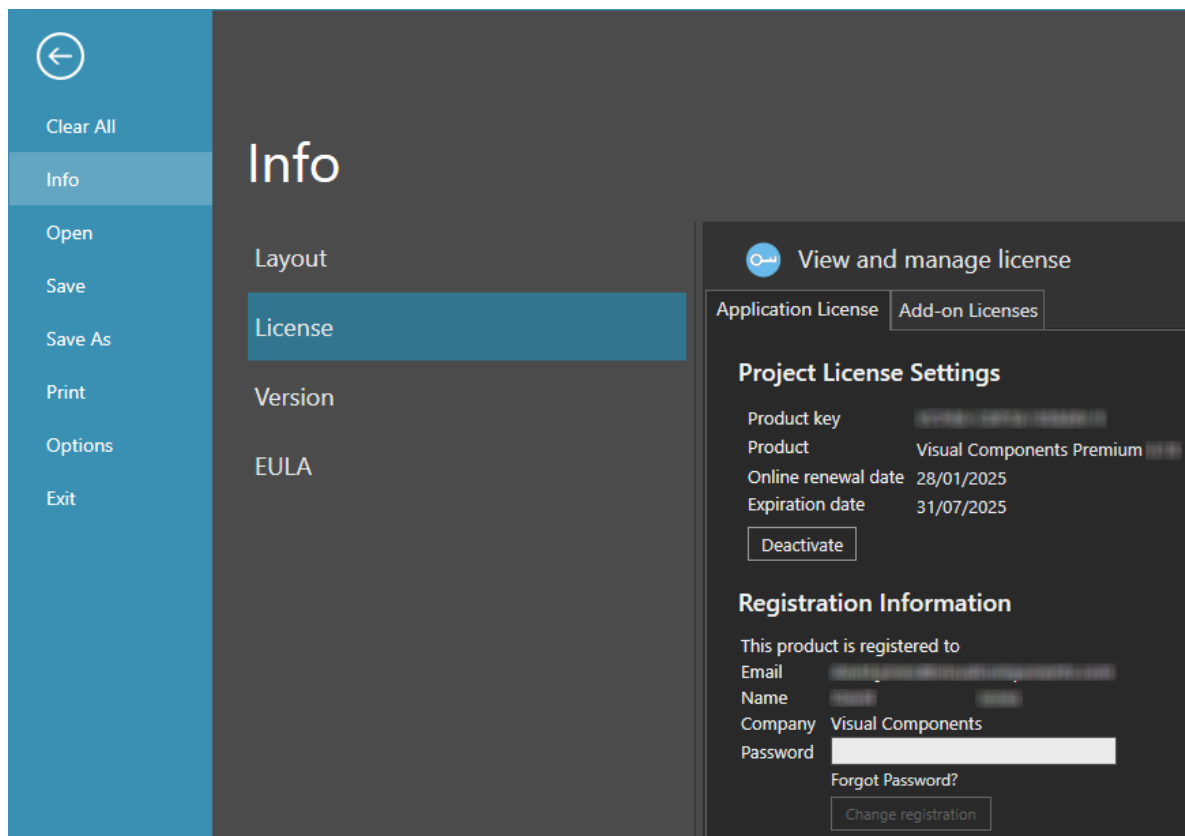
Note: The password you create must be at least eight characters in length, and include the following:

- At least one lower case letter.
- At least one upper case letter.
- At least one special character.
- At least one number.



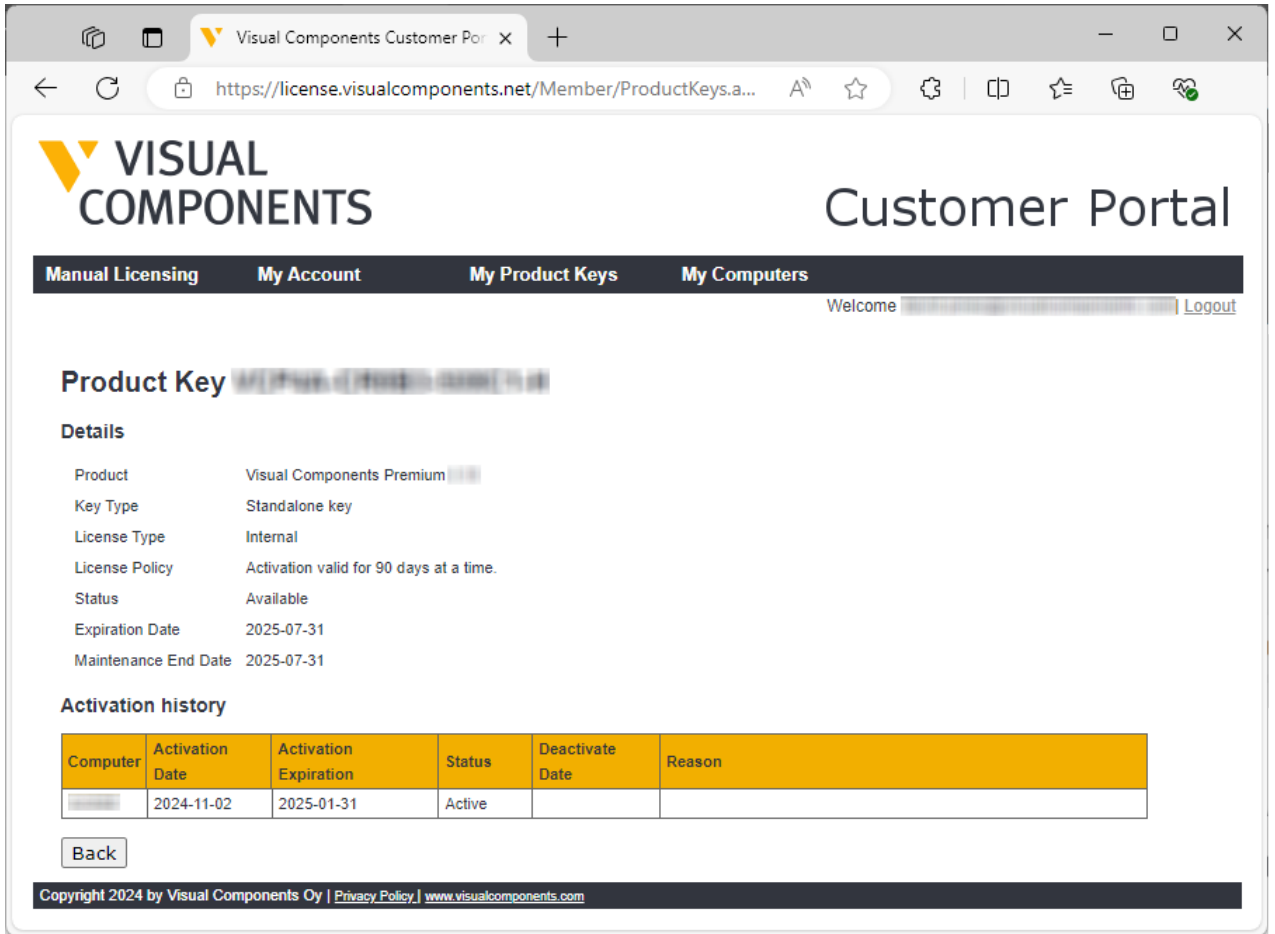
The registration form is titled "Have you registered a product before?". It features two radio button options: "Yes, I have an account" and "No, create one for me now". The "No, create one for me now" option is selected. Below the options are input fields for "First Name *", "Last Name *", "Company", "Email *", "Password *", and "Password Again *". At the bottom, there is a checkbox for "I agree to the Visual Components Privacy Policy *". Two buttons, "Register" and "Cancel", are located at the bottom right of the form.

4. Then once your account has been added, your account details will appear under **Registration Information** in the **License** section of the Backstage view.



The screenshot shows the Backstage view of the software. On the left is a navigation menu with options: Clear All, Info, Open, Save, Save As, Print, Options, and Exit. The "Info" section is active, showing "Layout", "License" (highlighted), "Version", and "EULA". The "License" section is expanded to show "View and manage license". This section includes tabs for "Application License" and "Add-on Licenses". Under "Project License Settings", it displays the product key, product name "Visual Components Premium", online renewal date "28/01/2025", and expiration date "31/07/2025", along with a "Deactivate" button. The "Registration Information" section shows the product is registered to a user with fields for Email, Name, Company "Visual Components", and Password, along with "Forgot Password?" and "Change registration" buttons.

- 5. Once the product key has been registered, you can check the activation history of your software license keys online in the Customer Portal at license.visualcomponents.net.

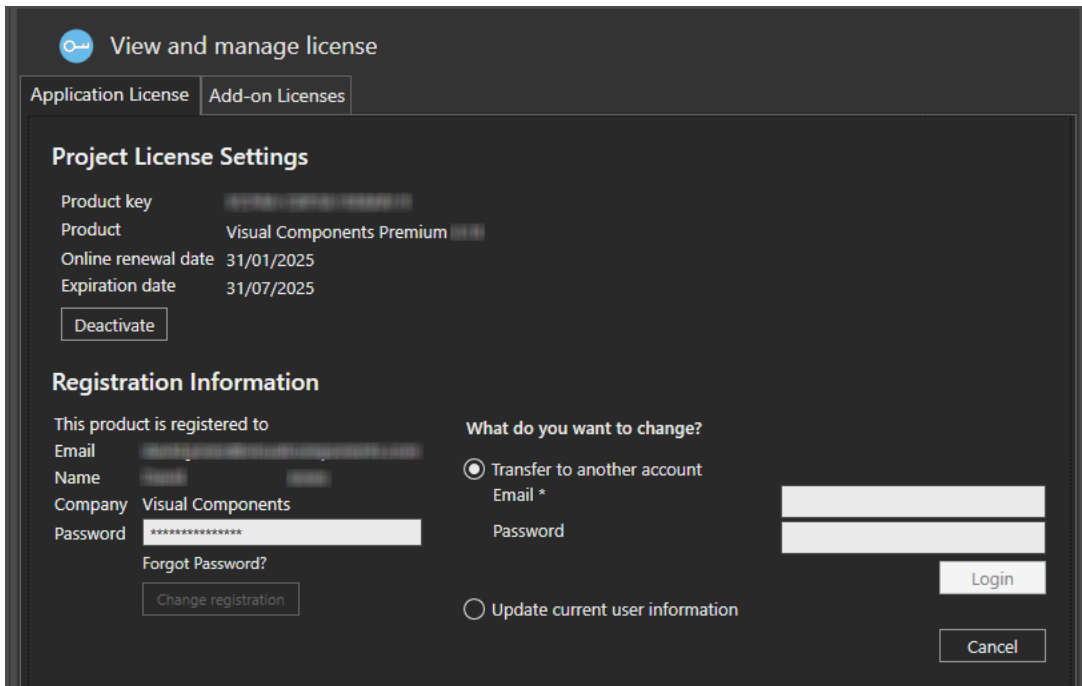


NOTE: Network License keys are not visible through the Customer Portal.

Updating Registration Information

Should you ever need to update your registered user information or transfer your product licenses to another account. Select the **FILE** tab to access the Backstage view, then select **Info** and **License** and in the **Registration Information** section, enter your account password, and click **Change registration**.

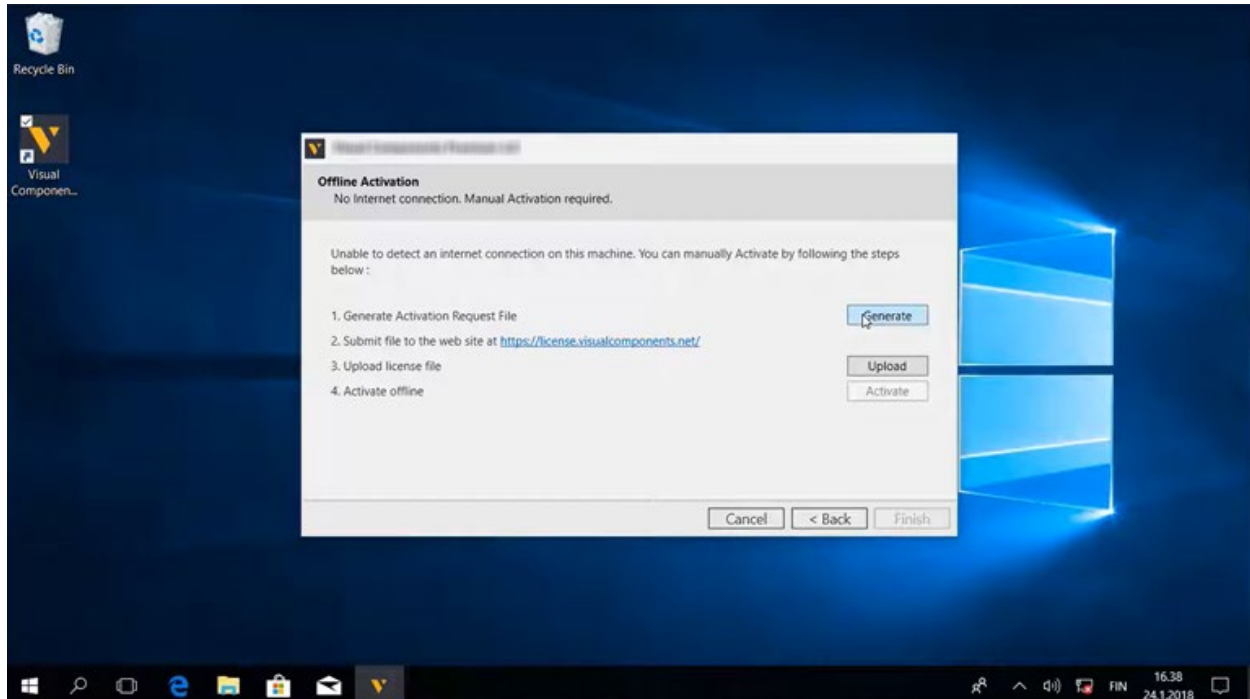
And then use either the **Transfer to another account** or **Update current user information** options.



NOTE: Transferring your product licenses will also include any currently activated add-On Licenses e.g. KUKA.Sim AddOn.

Offline Manual Activation

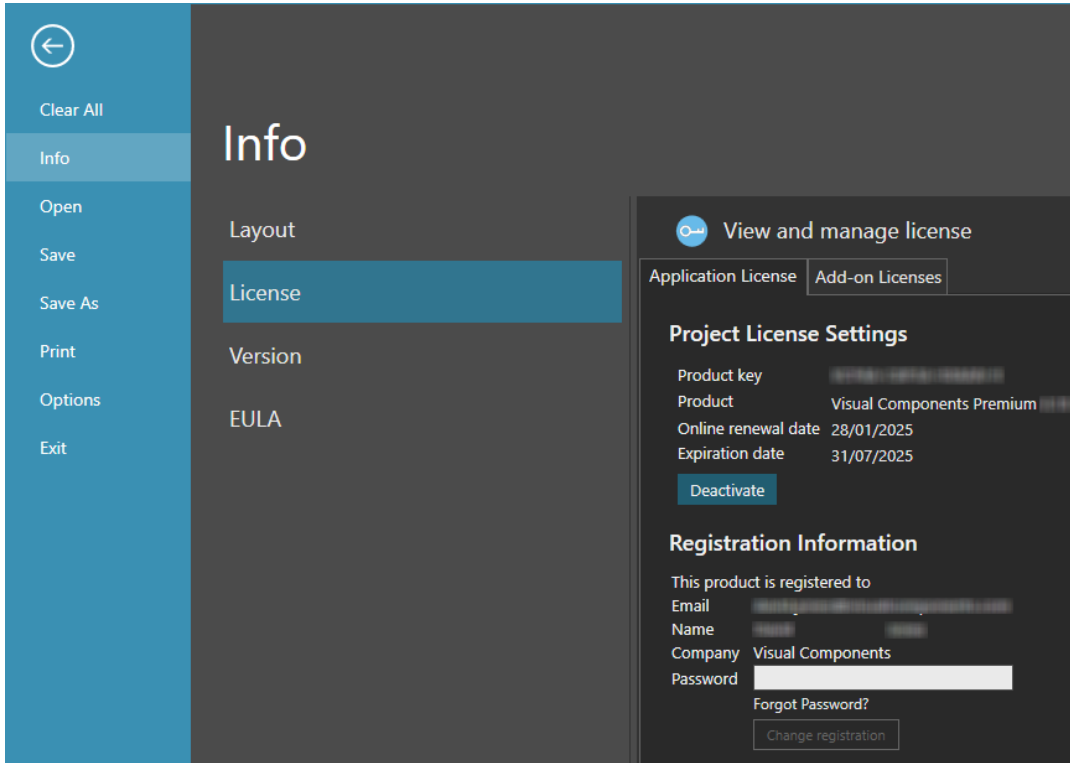
For detailed information on how to manually activate your copy of Visual Components, please use this link [Manually Activate a Standalone License](#) to view a detailed video guide on the Visual Components Academy.



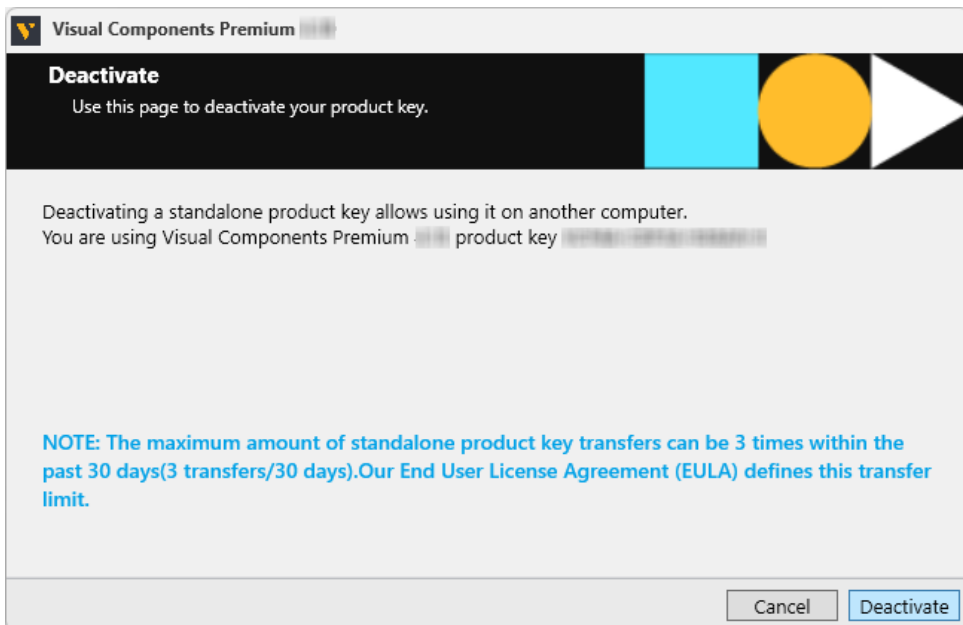
Online Deactivation

You can deactivate a standalone license for use on a different machine. For more information, refer to the [Deactivation limit/Transfer limit](#) section below.

1. Select the **FILE** tab to access the Backstage view, then select **Info** and **License**. And under **Project License Settings** click **Deactivate**.

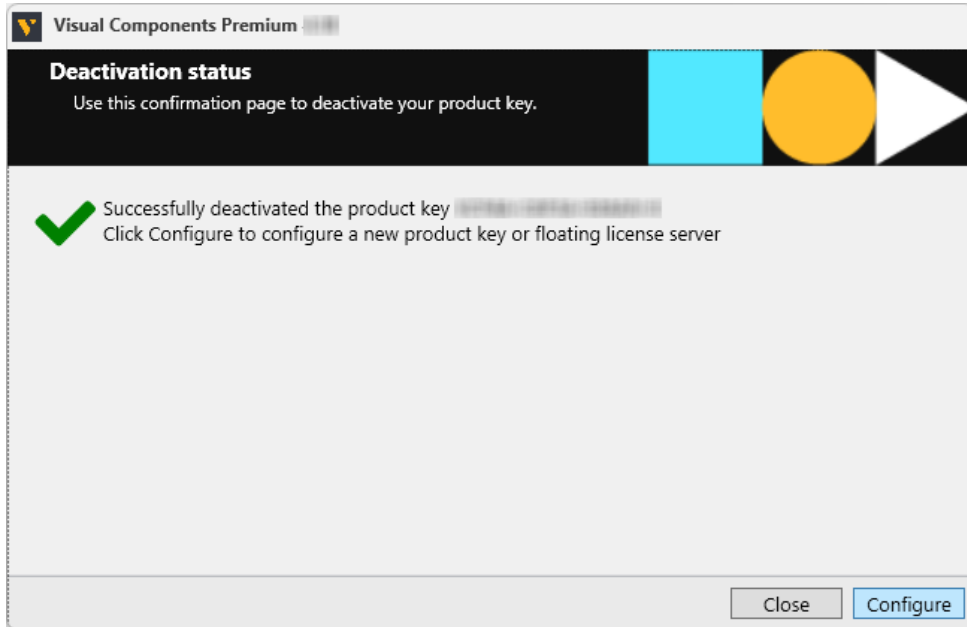


2. In the **Deactivate** dialog, click **Deactivate**.



3. If your license was successfully deactivated, in the **Deactivation status** dialog, do one of the following:

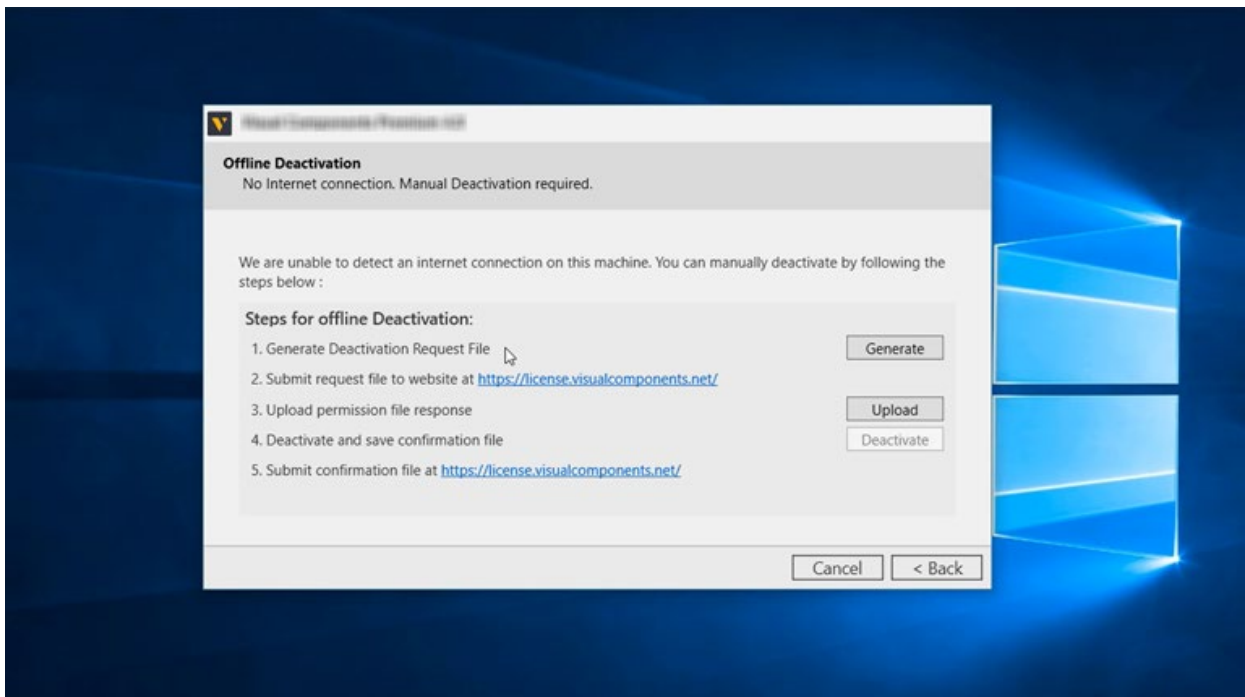
- To complete deactivation, click **Close**.
- To configure a new license, click **Configure**.



4. To configure a new license refer to the **Online Activation** section of this document.

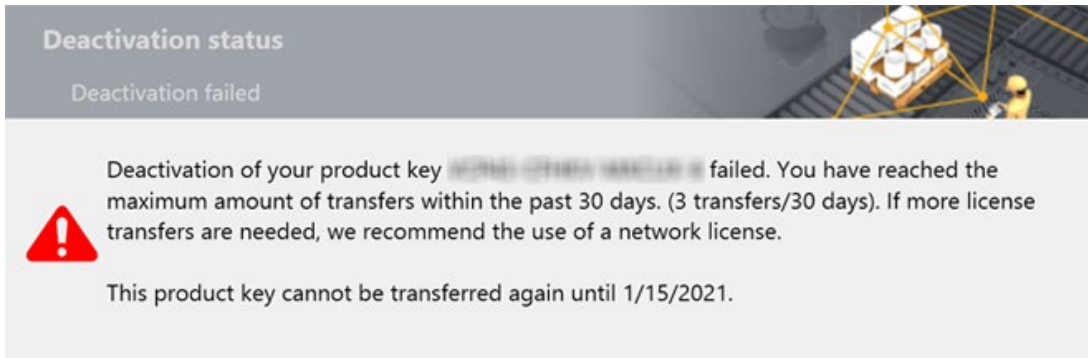
Offline Manual Deactivation

For detailed information on how to manually deactivate your copy of Visual Components, please use this link [Manually Deactivate a Standalone License](#) to view a detailed video guide on the Visual Components Academy.



Deactivation limit/Transfer limit

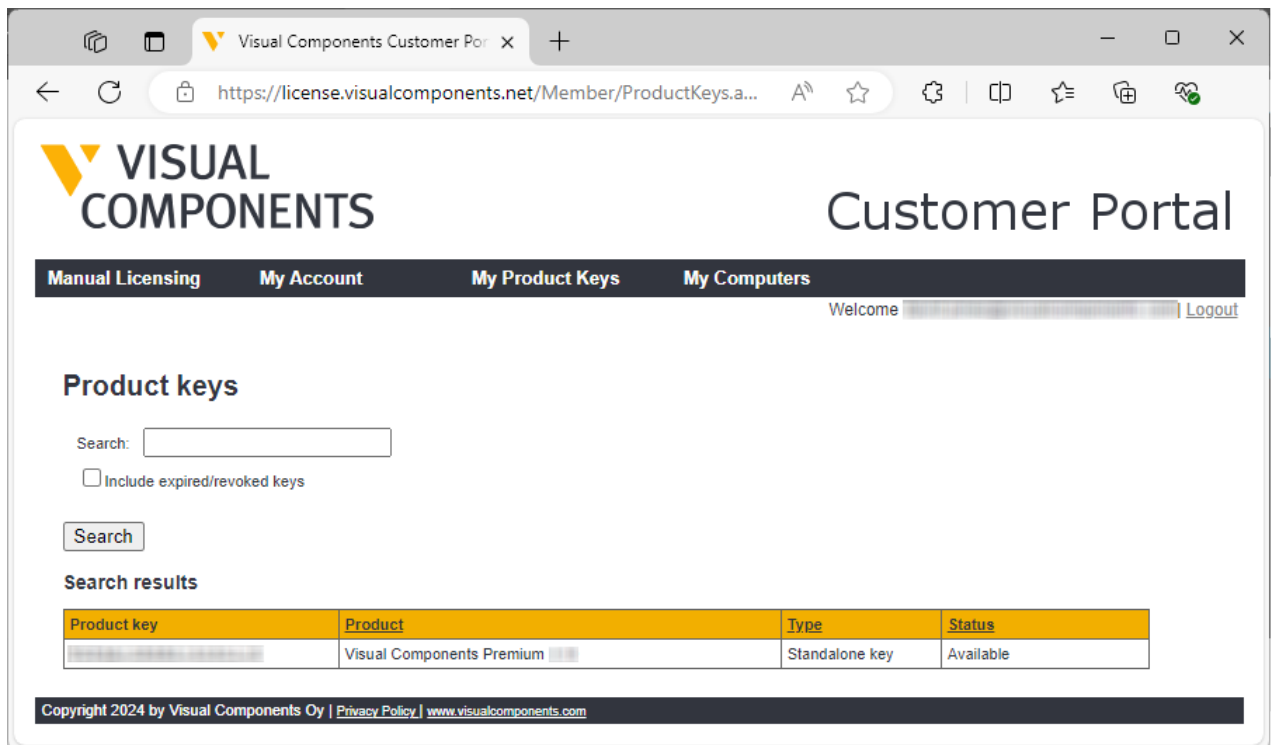
A perpetual standalone software license key can be activated and deactivated up to 3 times during a 30-day period. This transfer limit is defined in our End User License Agreement (EULA). Once this limit is reached, the date on which the next transfer is possible will be displayed in an error message.



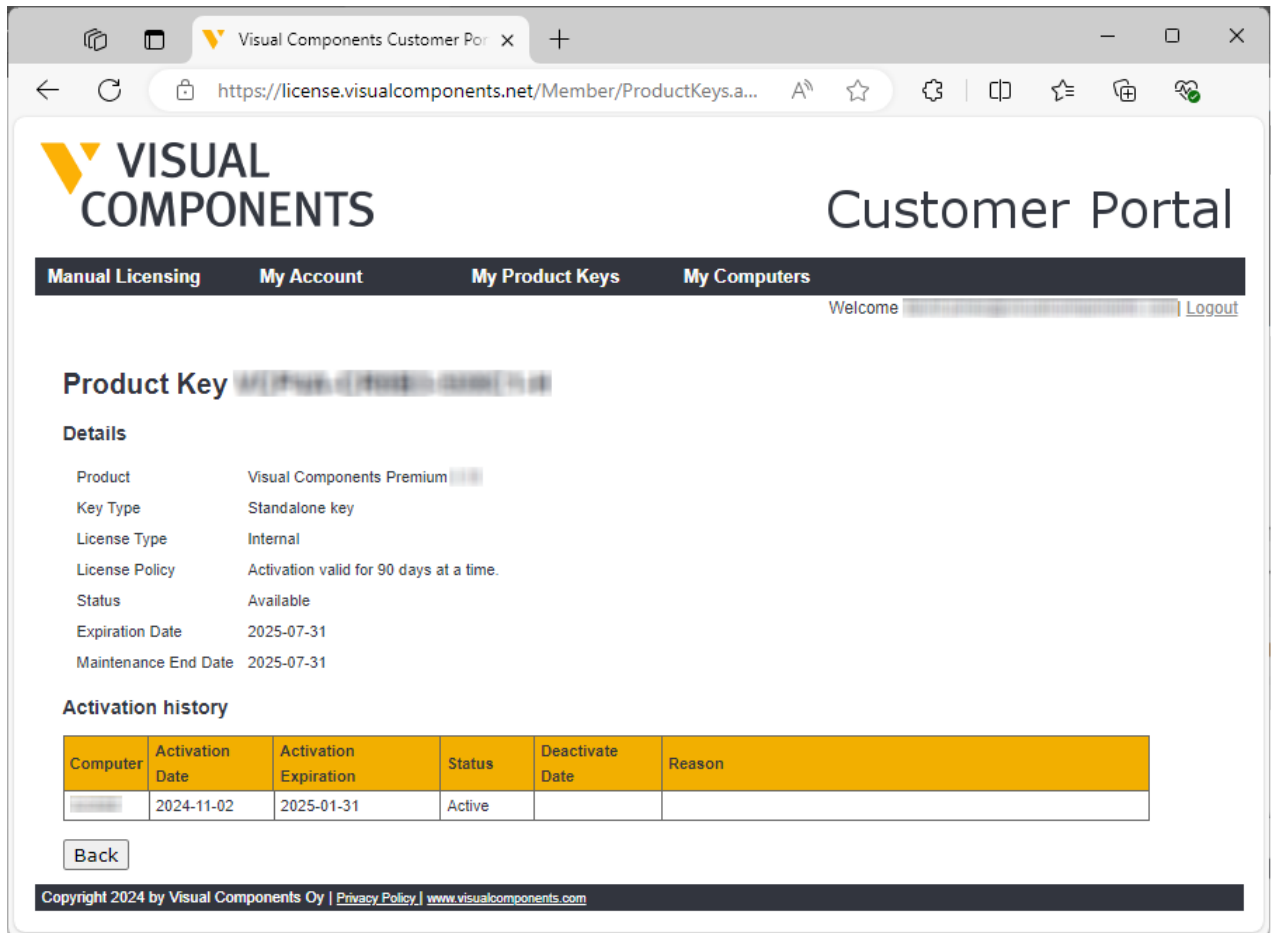
If there is a requirement to transfer a key more than 3 times in a month, you will need to upgrade to a Network License. Contact your Sales Representative to upgrade from a standalone to a Network License Key.

If you have Registered your product key, you can check the activation history of your software licenses online in the Customer Portal at license.visualcomponents.net.

1. To view the activation history of an individual license, from the **My Product Keys** page click on the **Product Key** link.



- Then in the **Details** page for that specific **Product Key**, you can examine its **Activation history**.

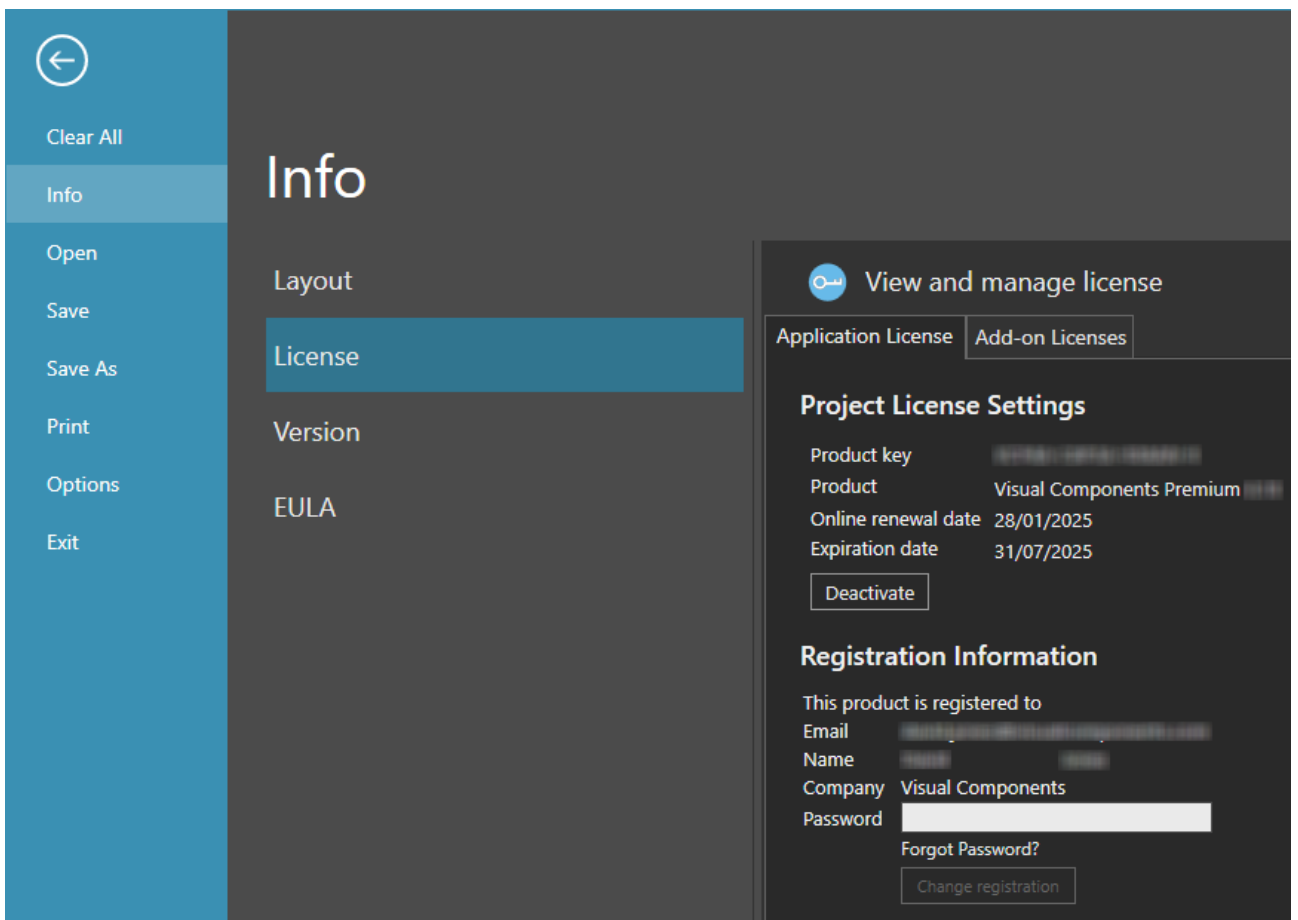


Note: Network License keys are not visible through the Customer Portal.

Activation renewal

- A standalone license is activated for example, for 90 days.
- Upon expiration of the current activation period, the product key will attempt to automatically re-activate when you launch the application.
- This requires your computer to be connected to the internet.
- If online renewal fails, you will receive a notification that asks you to renew the license manually.

To view the renewal date of your active License, select the **FILE** tab to access the Backstage view, then select **Info** and **License**. And under **Project License Settings** refer to the **Online renewal date**.

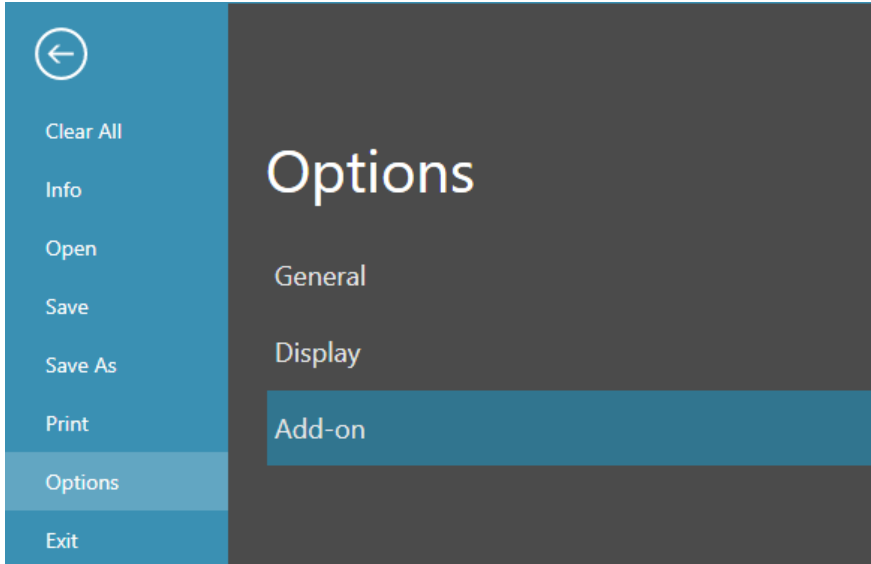


Managing Add-ons

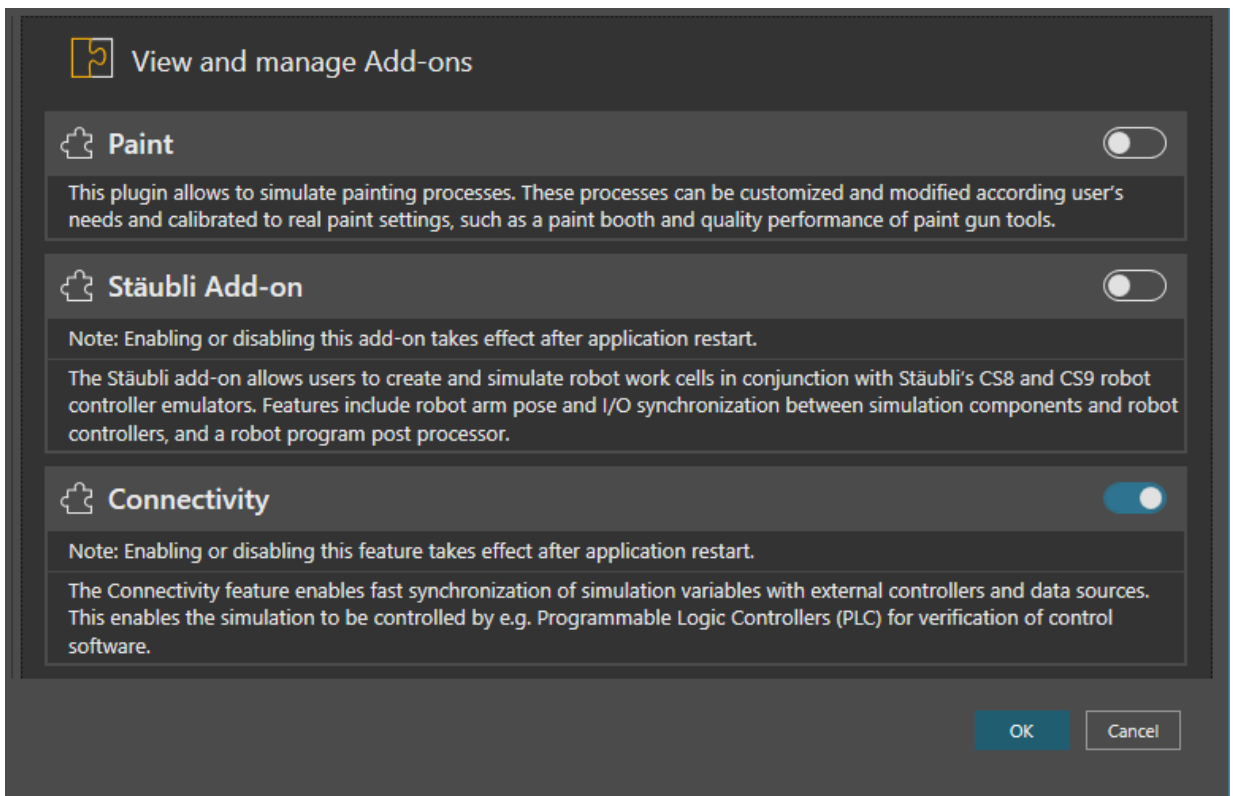
It is possible to enable and disable the list of available add-ons.

Note: In this example, we will enable the **CONNECTIVITY** tab. The list of available add-ons may vary per Visual Components product.

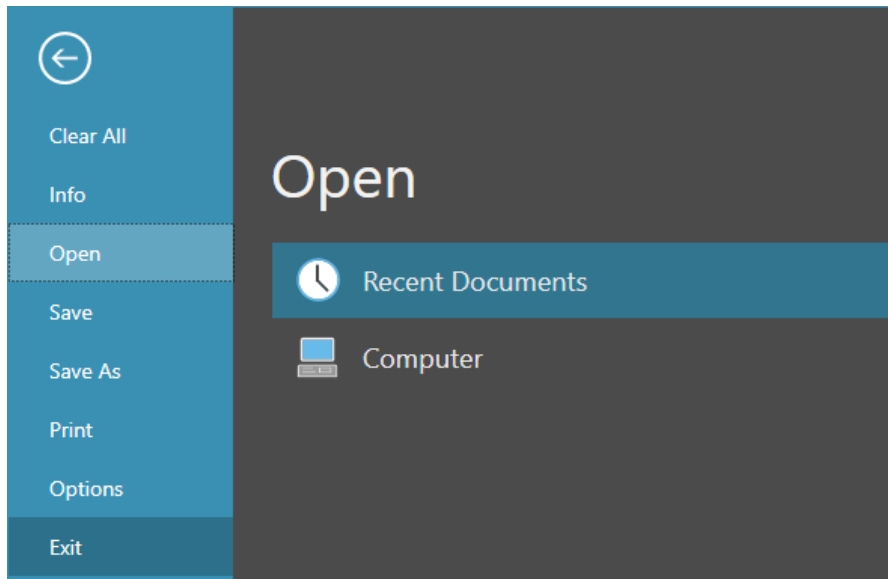
1. Select the **FILE** tab to access the Backstage view, then select **Options** and **Add On**.



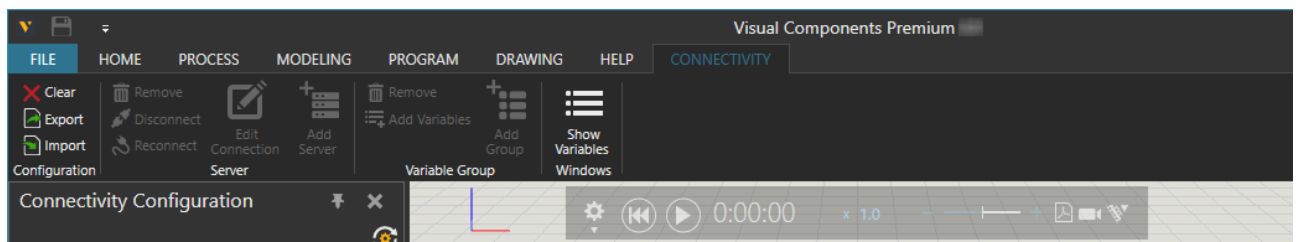
2. From the **View and manage Add-ons** section, use the toggle control to enable the **Connectivity** Add-on and then click **OK**.



3. Then select the **FILE** tab to access the Backstage view, and use **Exit** to close the application.



4. Then restart the application, and the **Connectivity** tab should now be available.



5. To disable the **Connectivity** tab, repeat the process using the toggle control to disable the **Connectivity** Add-on and then click **OK**.

Network License

Management of Network License keys for Visual Components, is managed by the Visual Components License Server Management Console, that is installed on a centralized server PC inside an organization's network. And a client PC needs to be inside the same network, to access a Visual Components product using a Network License key.

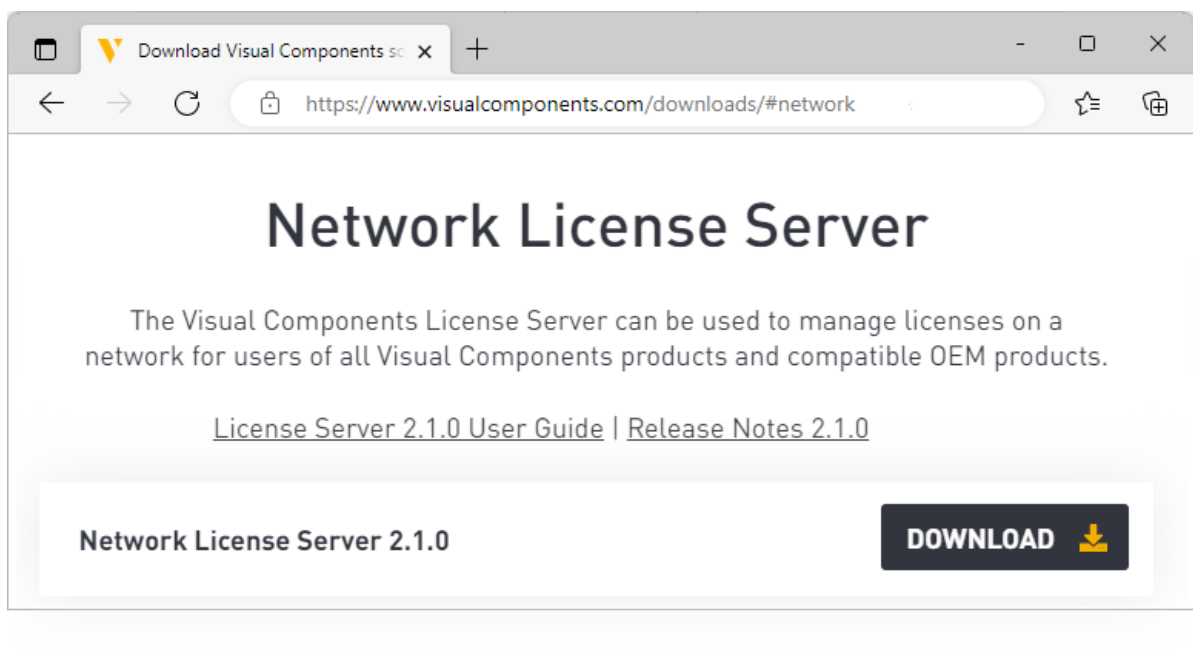
To download the Visual Components License Server Management Console and the User Guide, see the Network License Server section of downloads page at visualcomponents.com/downloads/.

Online Activation

To activate a Network License, your License Admin should already have setup a Network License Server.

Note: For information on setting up your License Admin, refer to the [Upgrade License](#) section below

- To install the Network License Server application, download the installer from visualcomponents.com/downloads/.
- To manage Network Licenses, refer to the Network License Server User Guide, available from visualcomponents.com/downloads/.

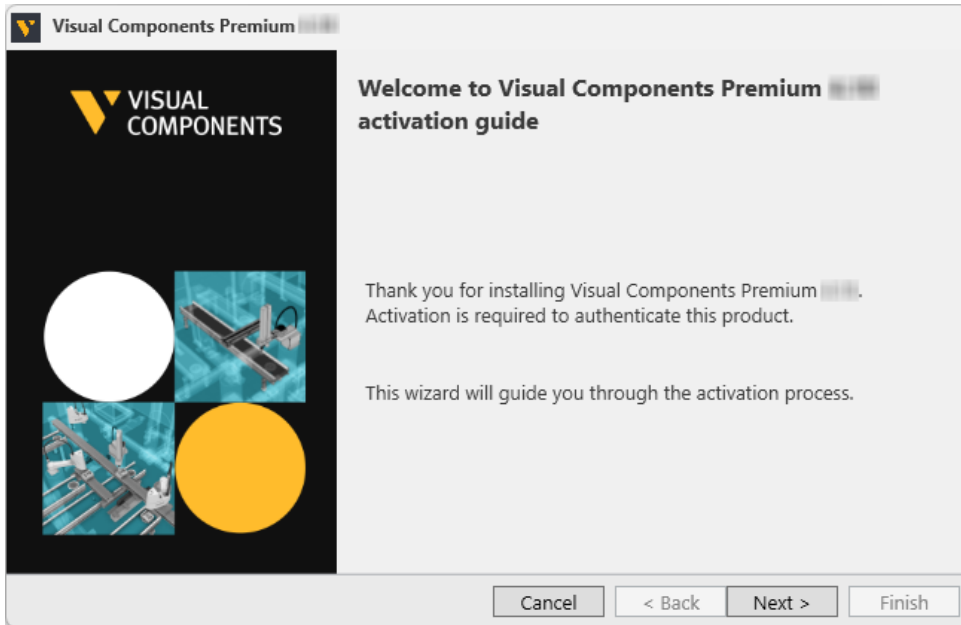


- To configure your network to support a Network License Server refer to the [Frequently Asked Questions](#) section of this document.

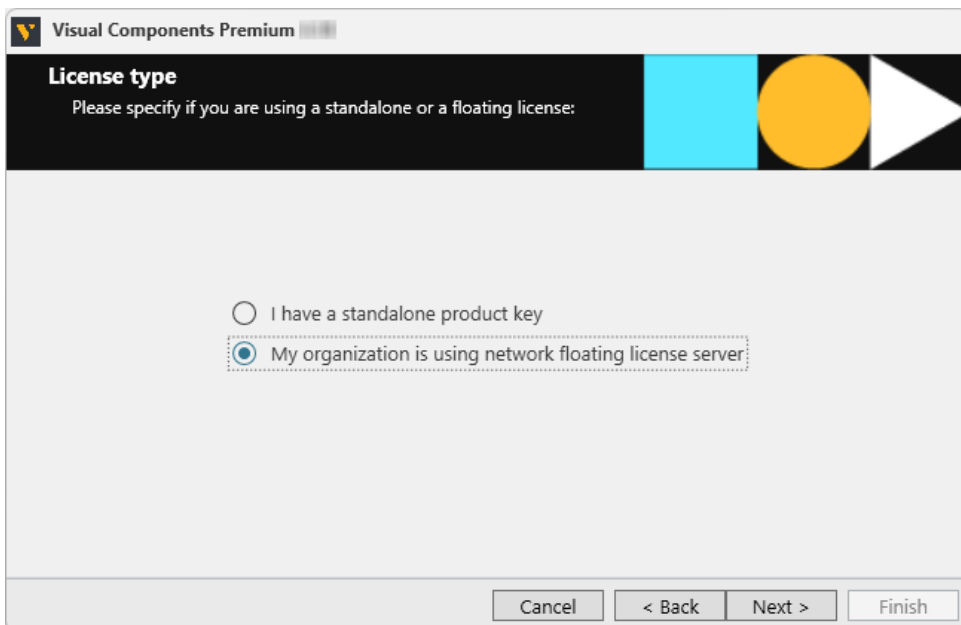
Using a Network License Key

To use your Network License key to activate a Visual Components product, follow these steps:

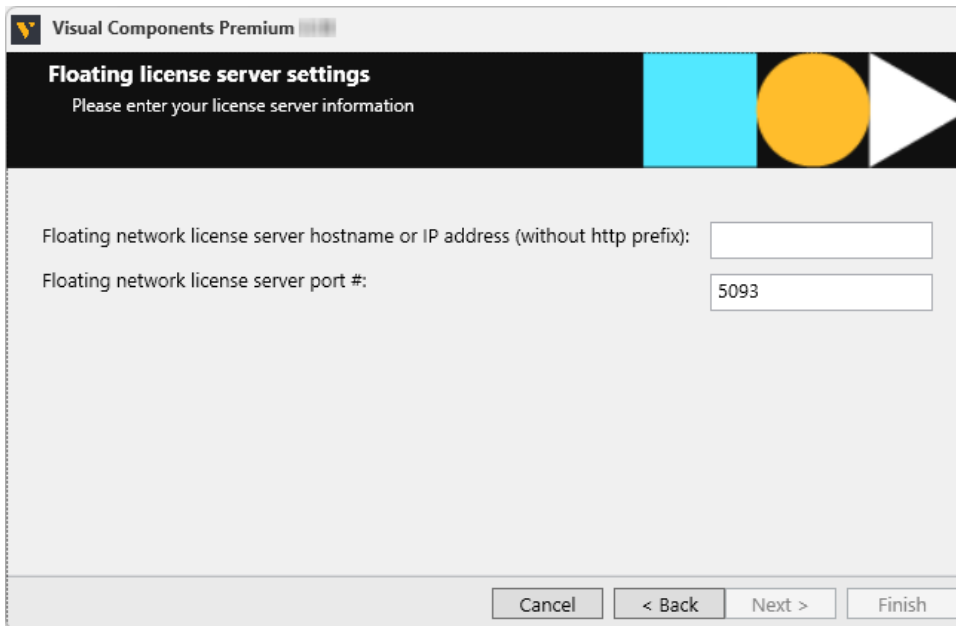
1. Run your Visual Components application.
2. In the *Welcome* dialog, click **Next**.



3. In the **License type** dialog, select *My organization is using network floating license server*, then click **Next**.



4. In the **Floating license server settings** dialog, enter your *Floating network license server host name or IP address (without http prefix)* and keep the *Floating network license server port #* as 5093 (if not modified in the Network License Server), then click **Next**.



Visual Components Premium

Floating license server settings

Please enter your license server information

Floating network license server hostname or IP address (without http prefix):

Floating network license server port #:

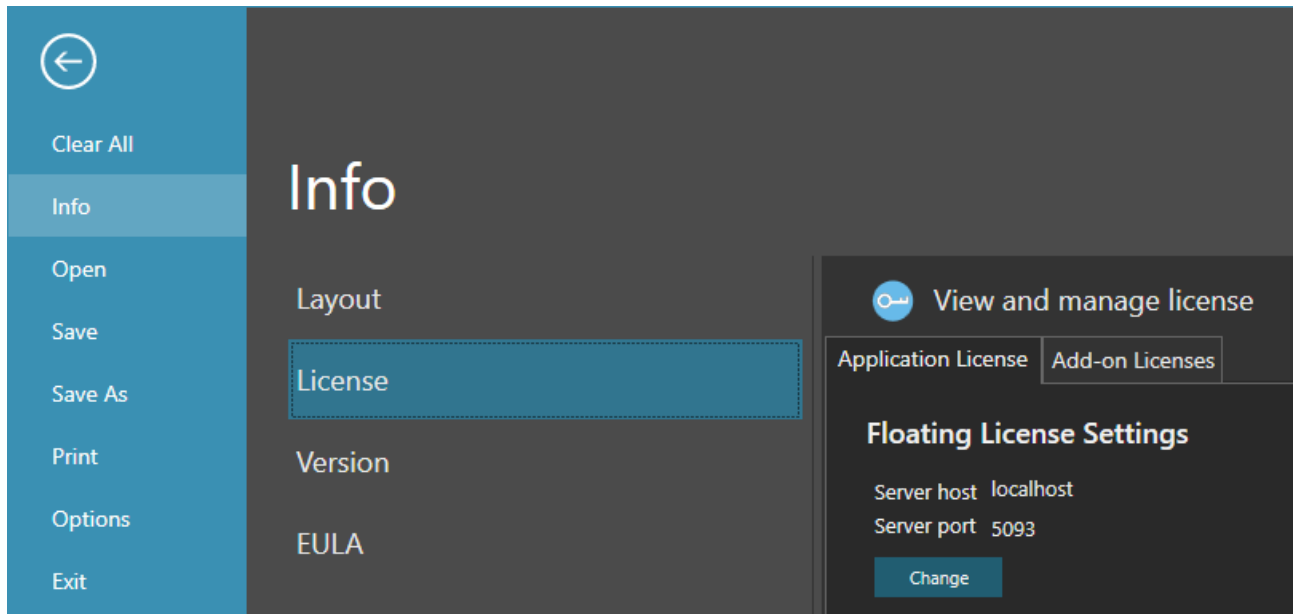
Cancel < Back Next > Finish

5. Click **Finish** to complete the Network license setup.

Changing the Network License Server address.

When you have activated a Visual Components product using a Network License key and the address of your Network License Server changes, to modify it follow the steps below:

1. Run your Visual Components application.
2. Select the **FILE** tab to access the Backstage view, then select **Info** and **License**.
3. And in the **Application License** tab, under **Floating License Settings** click **Change**.

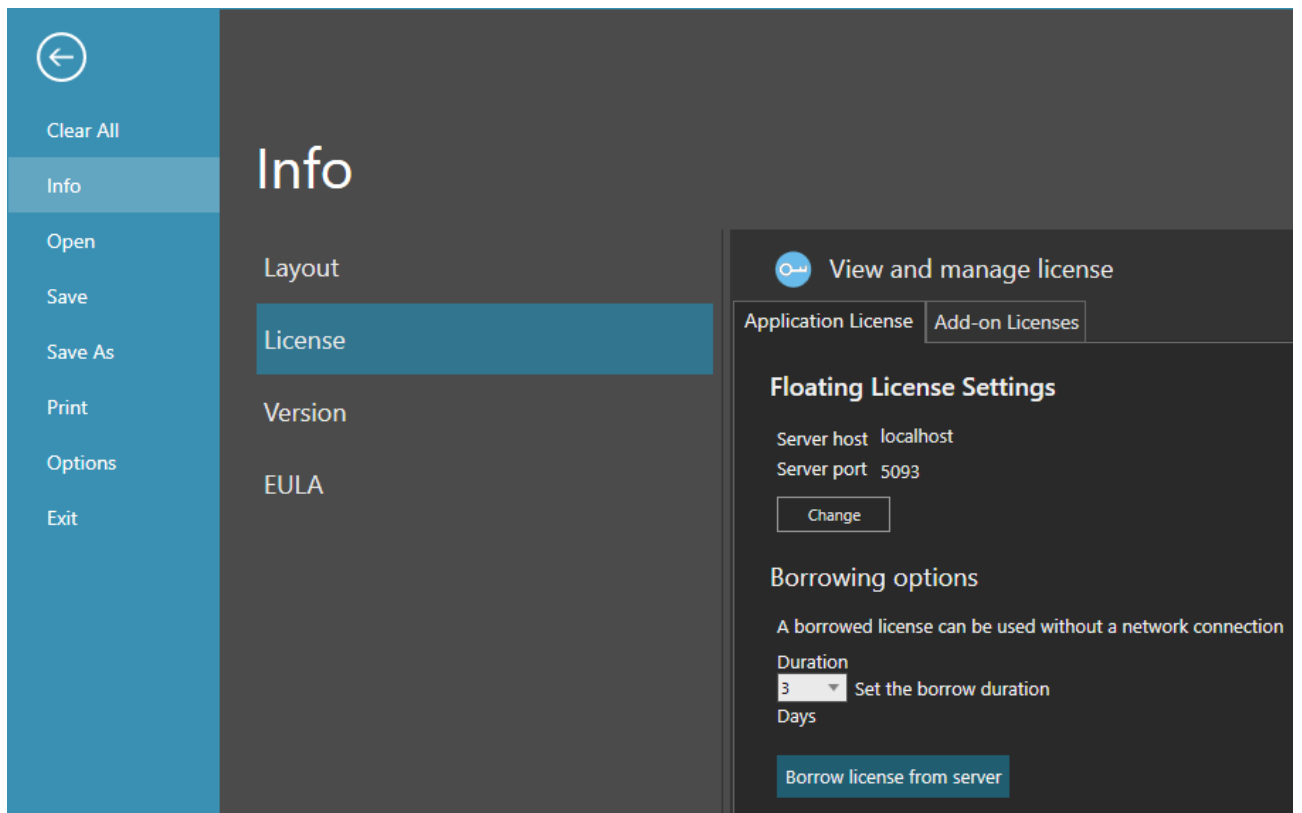


4. In the **Floating license server settings** dialog, modify your *Floating network license server host name or IP address (without http prefix)* and keep the *Floating network license server port #* as 5093 (if not modified in the Network License Server), then click **Next**.
5. Click **Finish** to complete the setup.

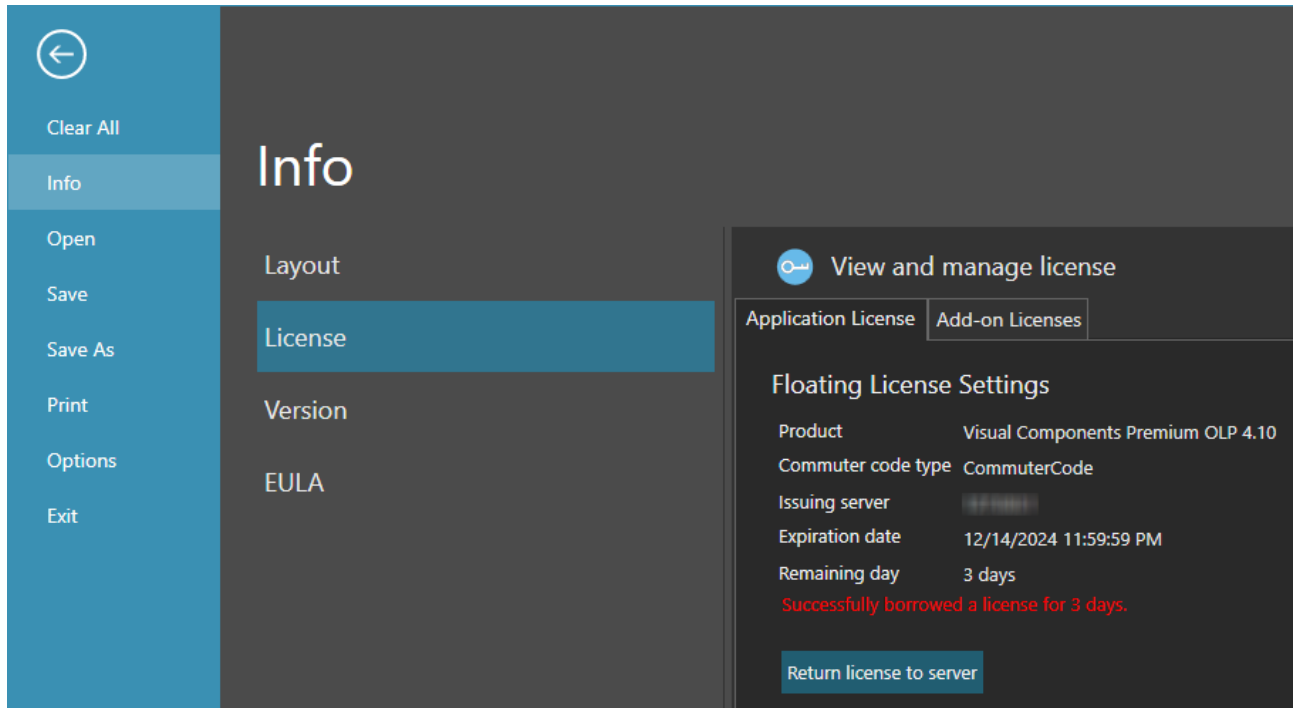
Borrowing a Network License Key for offline use.

When you have activated a Visual Components product using a Network License key and you wish to borrow a license from a Network License Server for an amount of days to work offline, and then check back in the license, follow the steps below:

1. Run your Visual Components application.
2. Select the **FILE** tab to access the Backstage view, then select **Info** and **License**.
3. And in the **Application License** tab, under **Floating License Settings**, to check out a license under **Borrowing options**, set the **Duration** of days for checking out a license.
4. Then click **Borrow license from server**.



5. Note the borrowed license information that now appears in the **Floating License Settings** section.
6. Then to return a license, click **Return license to server**.



Manual Activation

For instructions on how to manually activate your Network License, refer to page 14 of the Network License Server User Guide available [here](#).

Deactivation

To deactivate a Network License refer to pages 15 and 16 of the Network License Server User Guide available [here](#).

Activation renewal

To renew a Network License refer to page 17 of the Network License Server User Guide available [here](#).

Upgrade License

Software license upgrades require a designated License Admin User. The License Admin is a first point of contact and the only person in your organization entitled to request version upgrades.

- You only need to register a License Admin once.
- Only one License Admin User per company can be registered.
- You must provide a valid email address for the License Admin.
- To register a License Admin User, please submit a request at visualcomponents.com/license-management

When upgrading your software license(s) please note the following:

- A new software license key is required to install and activate Visual Components 4.8. And you can upgrade your current license free of charge if you have a valid maintenance contract.
- A Visual Components product key can only be used for the specified version. For example, a 4.8 Premium product key can be used only for Visual Components Premium 4.8. Therefore, every version needs a separate product key.
- Users with valid maintenance, can upgrade to the latest version for free, for example VC Product¹ 4.0/4.1/4.2 to VC Product 4.8.
- To request an upgrade your License Admin should submit a request at visualcomponents.com/upgrade-license/
- Upgrade requests are validated and upgraded keys will be delivered to the registered License Admin User only.
- Requests will be answered within 2 working days.
- Please note when upgrading to the new version, your old perpetual keys will become inactive after 90 days, and time-limited keys will become inactive after 30 days.
- Before upgrading license keys, the Admin User should check that their Network License Server installation is up to date. To install the latest version of the Network License Server application, see the Network License Server section of downloads page at visualcomponents.com/downloads/.

¹ VC Product refers to Visual Components Essentials/Visual Components Professional/Visual Components Premium application.

Command line deployment

A command line interface can be used to deploy Visual Components product.

Command line deployment

The installer consists of an EXE bootstrapper that launches an MSI installer. The EXE bootstrapper supports some command-line options which can be found by running the installer with the following parameter:

```
/help
```

Additionally, the installer supports all msixexec command-line options (all command-line parameters you can use for an MSI package). A command-line received by the EXE bootstrapper will be passed to msixexec when launching the main MSI.

Command-line switches order

When passing proprietary command-line parameters to an EXE setup, you cannot mix them with the standard MSI parameters. The correct order is to first specify the proprietary EXE switches and then the standard MSI switches.

For example, a correct command-line would be:

```
visualComponents.exe /exenoui /qn /norestart
```

Where `/exenoui` is an EXE parameter and `/qn`, `/norestart` are MSI parameters.

Fully silent installation

Two parameters are required for a silent installation where no UI (User Interface) is shown to the user. A third parameter for not restarting the PC after installation is optional. Note that the order of the parameters should be as in the usage example below:

`/exenoui` - (needs to be passed before MSI parameters).

`/qn` - no UI is shown.

`/norestart` - the machine will not be restarted when the installation is complete.

Usage example:

```
visualComponents.exe /exenoui /qn /norestart
```

Alternative options for showing some UI during installation

`/quiet` - quiet mode displays the installer UI but does not require user interaction.

`/passive` - displays only the installation progress bar, does not require user interaction.

When installing it is possible to exclude features as listed in the [Features](#) section. To exclude specific features the following parameters can be used comma separated inside a `REMOVE=""` command.

`vcm` - exclude the .vcm File Type Association

`vcmx` - exclude the .vcmx File Type Association

`KUKA.OLP` - exclude the KUKA.Sim AddOn

`Doosan` - exclude the KUKA.Sim AddOn

Usage example:

```
VisualComponents.exe /quiet ADDLOCAL=ALL REMOVE="vcm,vcmx,KUKA.OLP,Doosan"
```

Restart Options

`/norestart` - the machine will not be restarted when the installation is complete.

`/promptrestart` - the user will be prompted if a restart is required.

`/force` - restart the machine will be restarted when the installation is complete.

Custom Installation Path

`APPDIR=""` - Specify the desired installation path by passing the path string between the quotation marks.

Usage example:

```
VisualComponents.exe /xenoui /qn APPDIR="C:\Program Files\MyFolder"
```

Uninstallation

`/uninstallinst <Product Instance>` - uninstalls an instance of the product.

Usage example:

```
VisualComponents.exe /x // /qn
```

`UNINSTALL_DEACTIVATE_LICENSE=1` - deactivates active license during uninstallation

Usage example:

```
VisualComponents.exe /uninstallinst "Visual Components Premium 4.10.0" /qn  
UNINSTALL_DEACTIVATE_LICENSE=1
```

`UNINSTALL_LOCAL_APPLICATION_DATA` - uninstalls files and folders found in the following directory `C:\Users\UserName\AppData\Local`

Usage example:

```
VisualComponents.exe /uninstallinst "Visual Components Premium 4.10.0" /qn  
UNINSTALL_LOCAL_APPLICATION_DATA=1
```

`UNINSTALL_PUBLIC_DOCUMENTS` - Uninstalls files and folders found in `C:\Users\Public\Documents`.

Usage example:

```
VisualComponents.exe /uninstallinst "Visual Components Premium 4.10.0" /qn  
UNINSTALL_PUBLIC_DOCUMENTS=1
```

License settings

To prefill license information (license key or floating license information) the following parameters can be used where `PRODUCT_LICENSE_SETTINGS` allows setting three values separated by a vertical bar "|" symbol:

```
"{license key}|{floating license server ip or host}|{ floating license server port}"
```

Usage example:

```
VisualComponents.exe /exenoui /qn PRODUCT_LICENSE_SETTINGS="VCP49-XXXX-XXXXX-X"|Network_Server|5093"
```

Frequently Asked Questions

- Do I need to configure a firewall on my network to access Visual Components Network License Server?
 - a. Network Access: Firewall needs to be configured to allow UDP traffic on the chosen port (default is 5093).
 - b. Internet Access: Access to the Internet (HTTPS) is required on the server for automatic license activation.

Additionally:

- c. Every client needs to be able to access the local network server through the defined access point to use Visual Components products with network licenses.
 - d. Distributing network licenses over the Internet is explicitly not supported by the network license server as stated in the End User License Agreement (EULA) for Visual Components products.
- How do I create a Visual Components Customer Account that I can use to register my software license keys?
 - a. You can create a Customer Account using Visual Components software, refer to the [Register Product Key](#) section.
 - b. Or you can create a Customer Account online through the Visual Components Customer Portal at license.visualcomponents.net.

Should any user still require assistance, then please contact Visual Components Support via email at support@visualcomponents.com